

# Smart ECG Viewer

Data Management Software

Version 1.0



# Table of Contents

<b>1 Installing Smart ECG Viewer in Windows XP .....</b>	<b>1</b>
1.1 Installation Procedures .....	1
1.2 Verifying the Installing Status .....	9
<b>2 Installing Smart ECG Viewer in Windows 7 .....</b>	<b>10</b>
2.1 Installation Procedures .....	10
2.2 Verifying the Installing Status .....	19
<b>3 Troubleshooting .....</b>	<b>20</b>
3.1 Installing Dotnetfx Manually .....	24
3.2 Installing MSDE 2000 Manually in Windows XP .....	26
3.3 Installing SQL Server 2005 Express Manually in Windows 7.....	26
3.4 Starting up MSDE 2000 in Windows XP.....	27
3.5 Starting up SQL Server 2005 Express in Windows 7 .....	28
3.6 Installing Sentinel Manually .....	29
3.7 Installing AppointService Manually .....	31
3.8 Starting up AppointService .....	33
3.9 Installing PDFCreator Manually .....	33
3.10 Installing Symbol COM Port Emulation Driver Manually .....	38
3.11 Installing VS2005 SP1 Redistributable Pack Manually.....	39
3.12 Adding SQL Server Administrator Role in Windows 7 .....	39
<b>4 Troubleshooting of Database Installation .....</b>	<b>42</b>

# 1 Installing Smart ECG Viewer in Windows XP

**NOTE:** Before installation, check whether an earlier version of the Smart ECG Viewer software has been installed. If yes, uninstall the earlier version and the AppointService displayed in the control panel.

Insert the installation CD into CD-ROM, and double-click on **Setup.exe**



Setup.exe  
Setup Microsoft ...

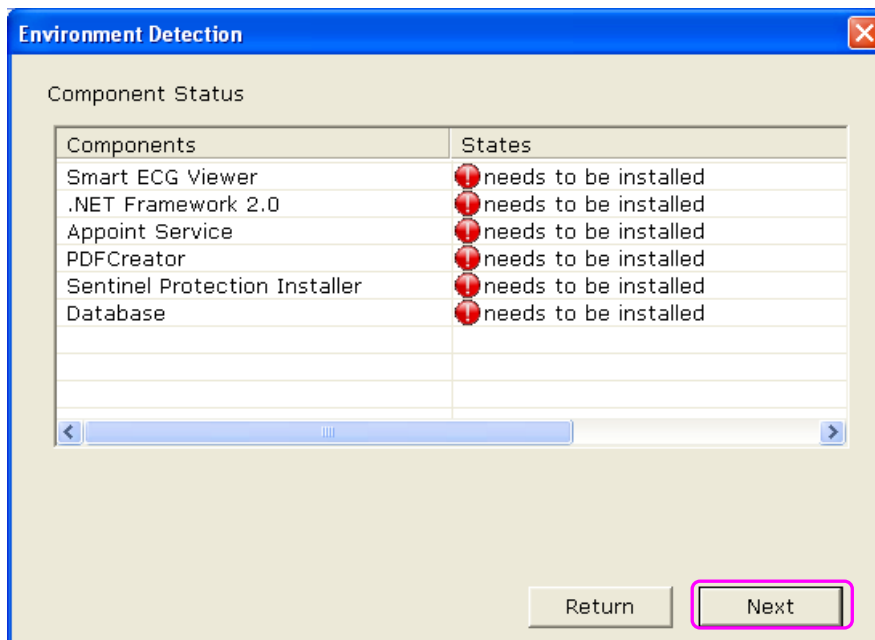
in the installation CD to open the following installation window.



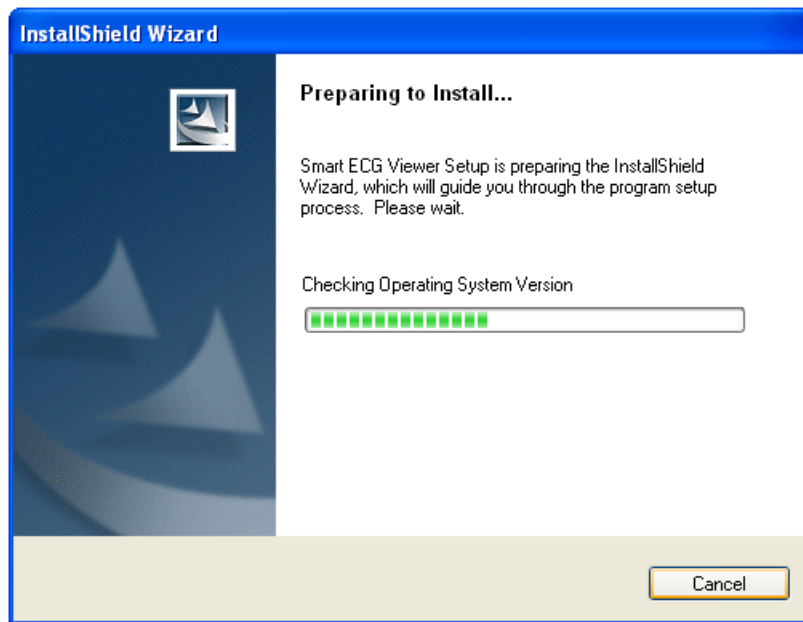
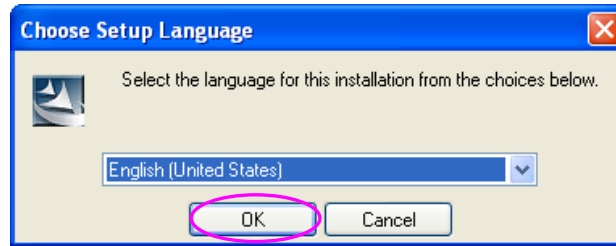
Figure 1 Installation Window

## 1.1 Installation Procedures

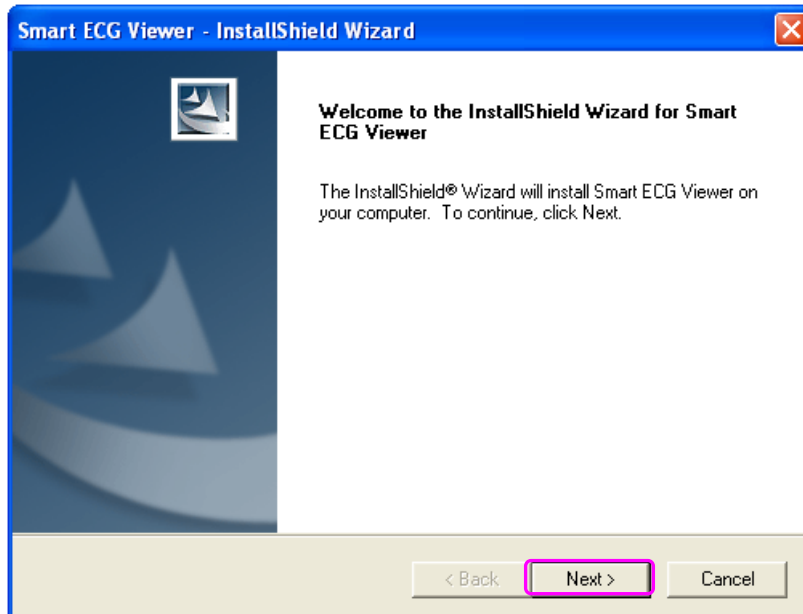
1. Click on **Install** in the installation window (Figure 1). Then the **Environment Detection** window will pop up.



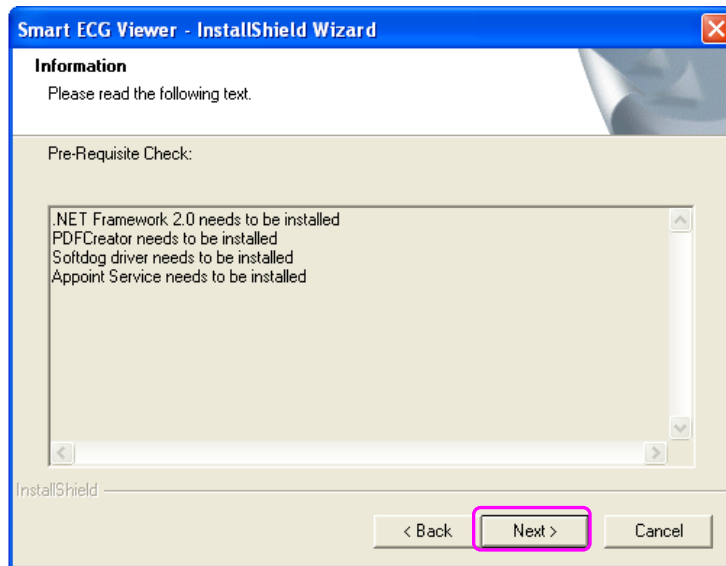
2. Click on the **Next** button. Select a language, and then click on the **OK** button.



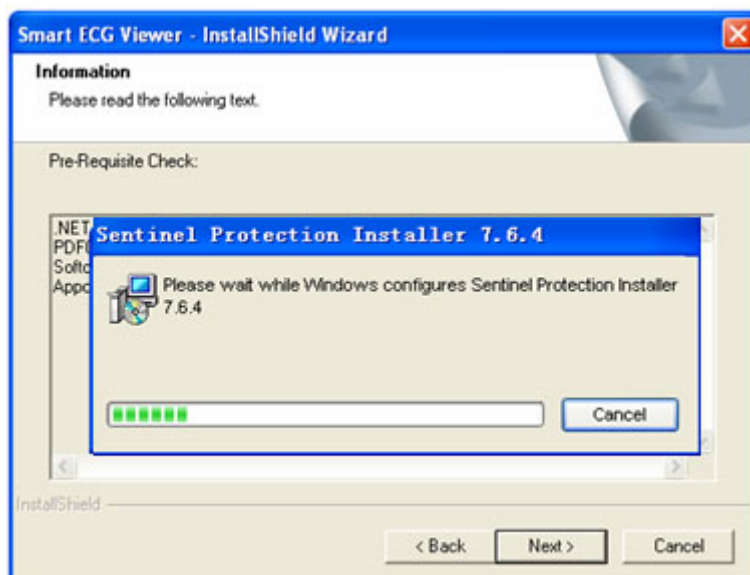
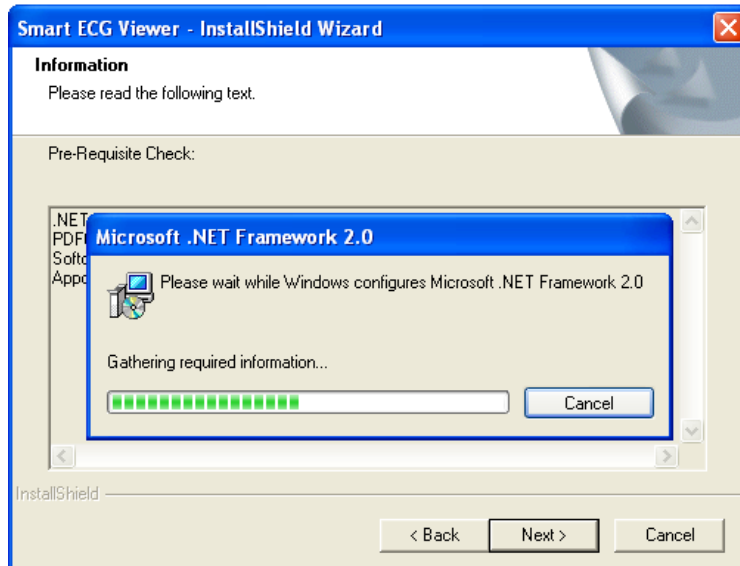
3. Click on the **Next >** button to continue.

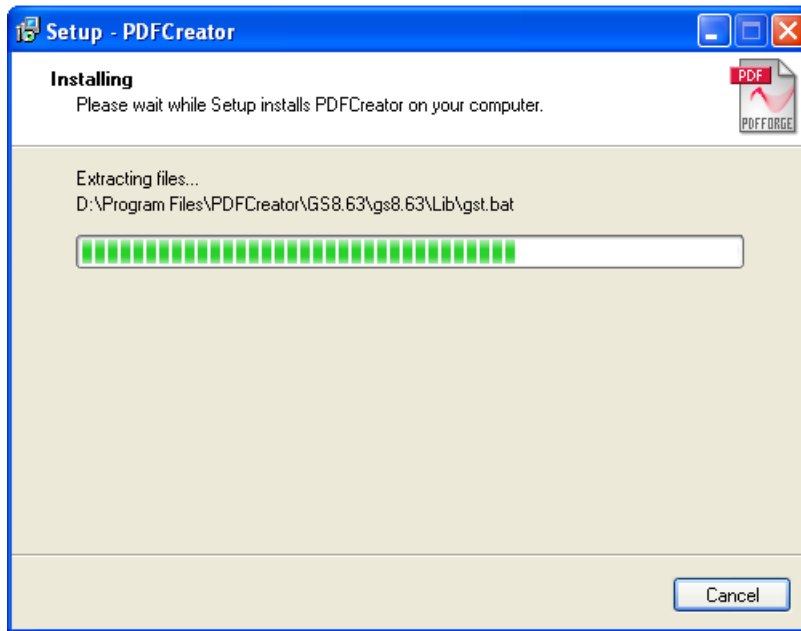


4. Click on the **Next >** button.

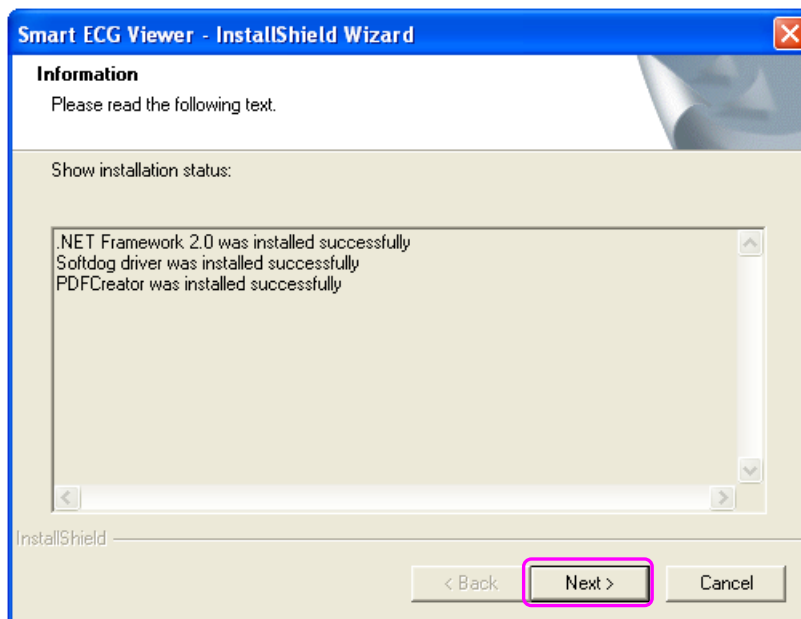


Smart ECG Viewer software and its components are ready to be installed.



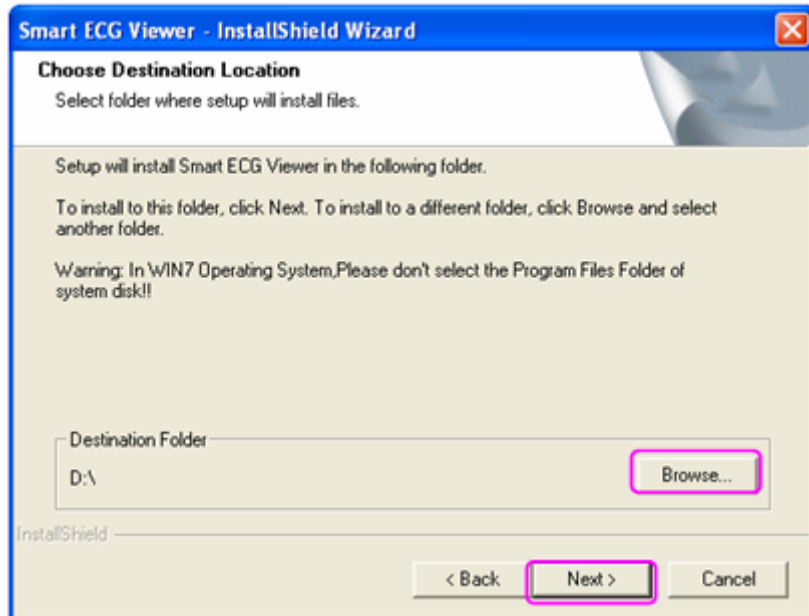


5. Click on the **Next >** button after the components are installed successfully.

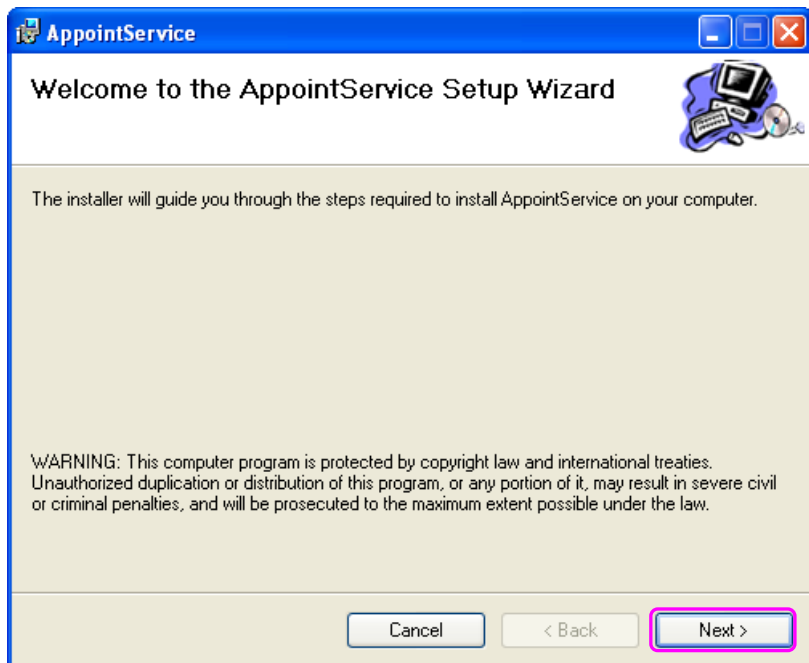


6. Click on the **Next >** button to install Smart ECG Viewer software to the default folder.

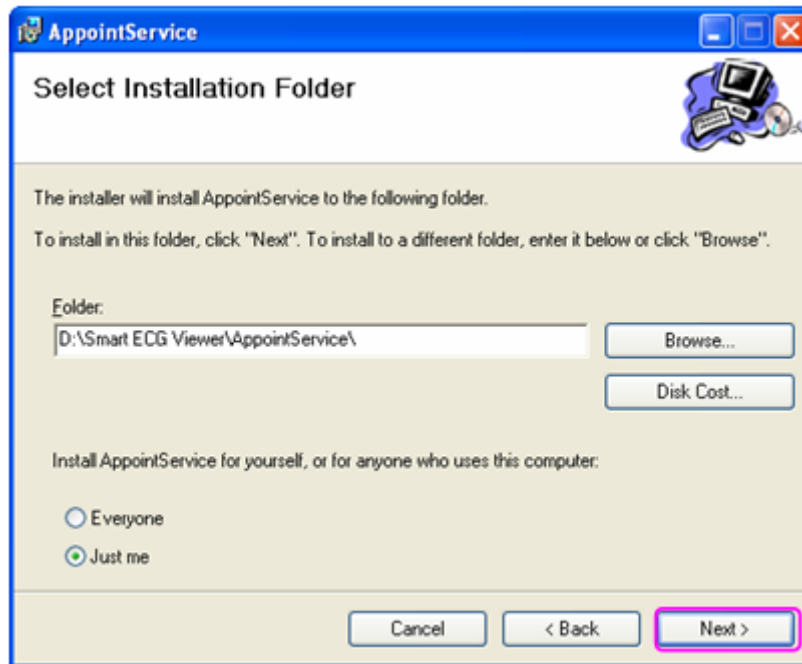
Or click on the **Browse...** button to choose the installation path, and then click on the **Next >** button to continue.



7. Click on the **Next >** button to install AppointService.

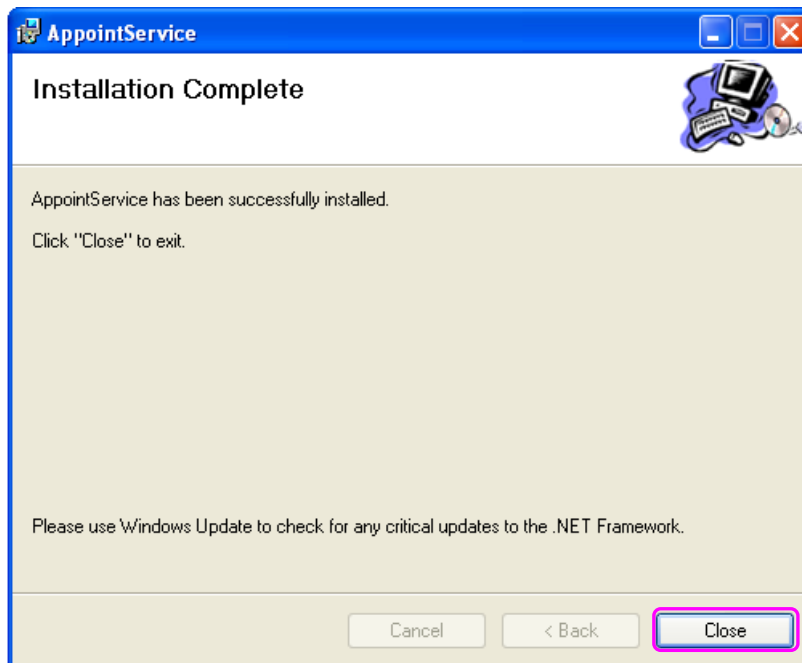


- Click on the **Next >** button to install AppointService to the default folder.



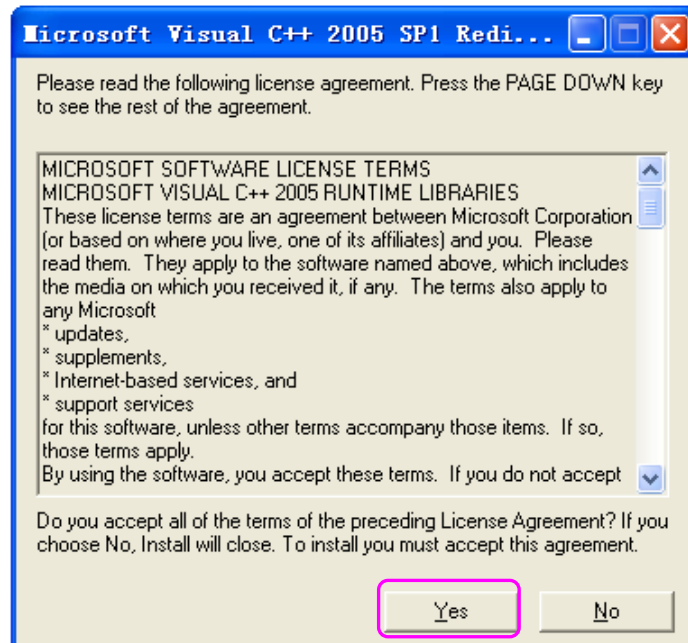
**NOTE:** Do not change the default folder of AppointService.

- Click on the **Close >** button to complete AppointService installation.

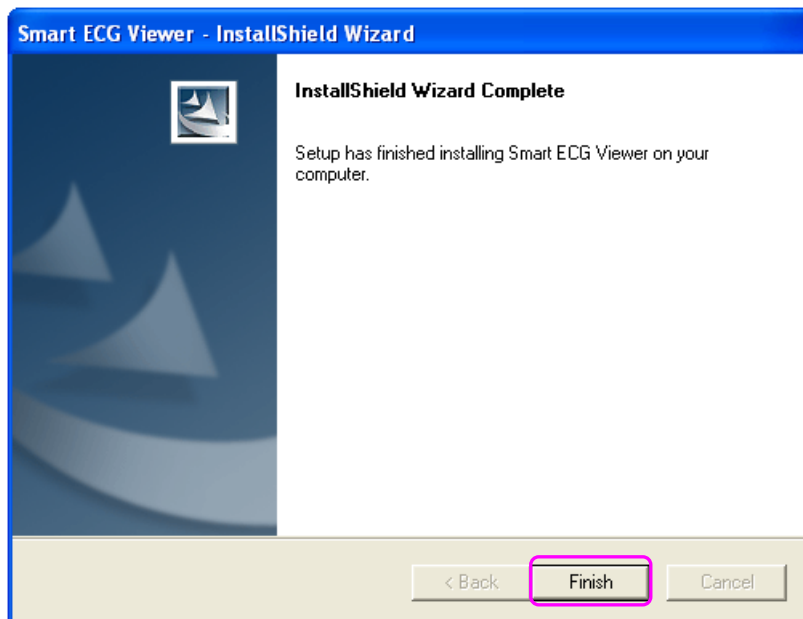




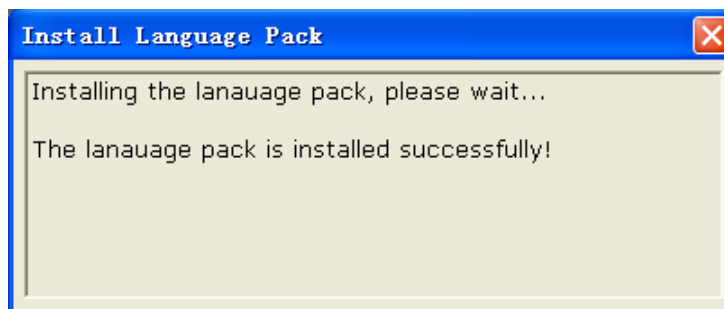
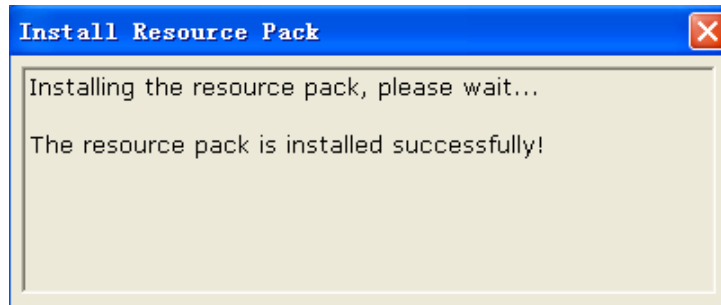
10. Click on the Yes button to install VS2005 SP1 redistributable pack.



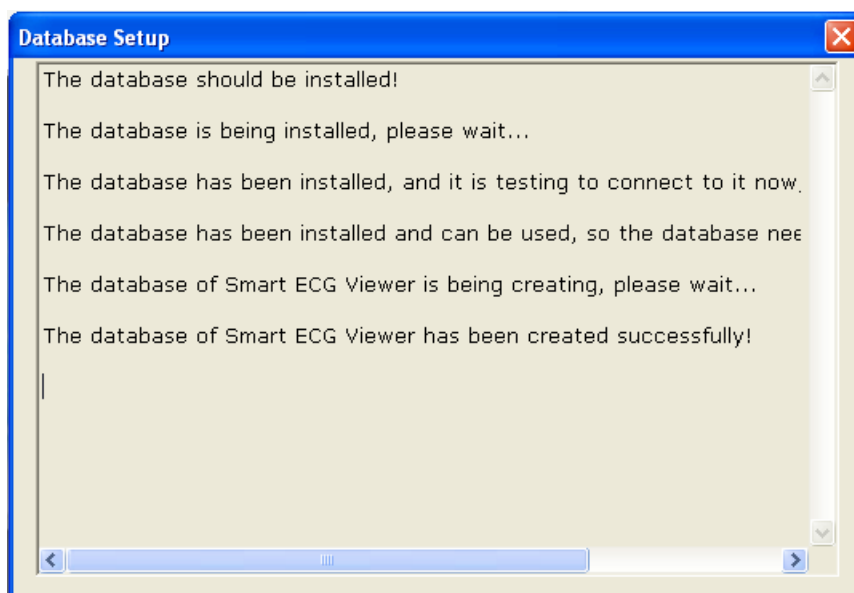
11. Click on the **Finish** > button to finish Smart ECG Viewer installation.



12. The system starts the installations of the resource pack, the language pack and the database installation if Smart ECG Viewer software and its components are installed successfully.

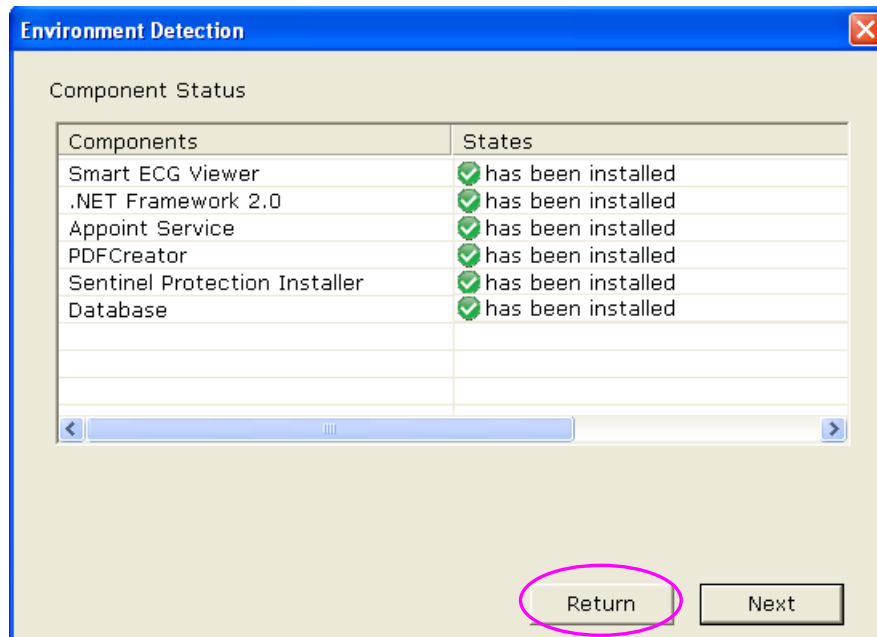


The database installation includes four procedures: the system detects whether the database needs to be installed → the database is installed → the system detects whether the database can be connected → Smart ECG Viewer database is created. During the four procedures, the system will respectively give hint information, as shown in the following picture:



## 1.2 Verifying the Installing Status

After installing Smart ECG Viewer, click on the **Install** button in the installation window (Figure 1). Then the **Environment Detection** window pops up. Check the installing status of all the components. If all the components are installed successfully as the following figure shows, the installation of the components is completed. Click on the **Return** button.

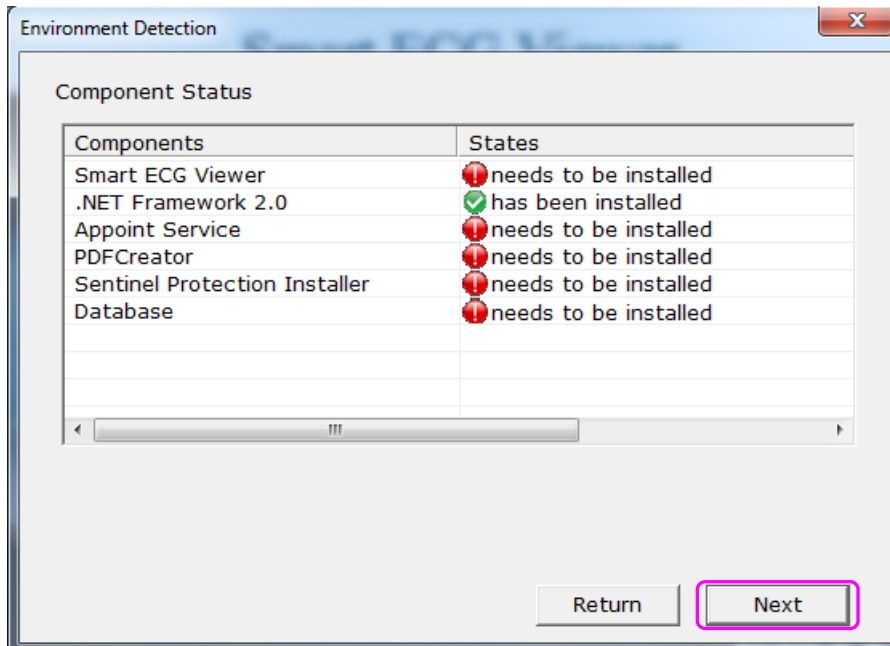


If the **Environment Detection** window shows that a certain component needs to be installed, please install it manually. For details, please refer to Chapter 3.

## 2 Installing Smart ECG Viewer in Windows 7

### 2.1 Installation Procedures

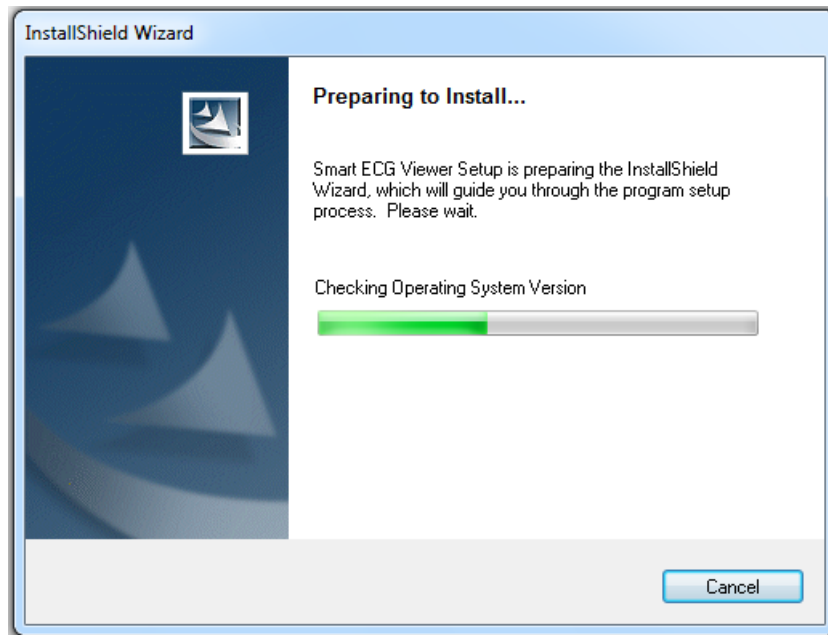
1. Click on **Install** in the installation window (Figure 1). Then the **Environment Detection** window will pop up.



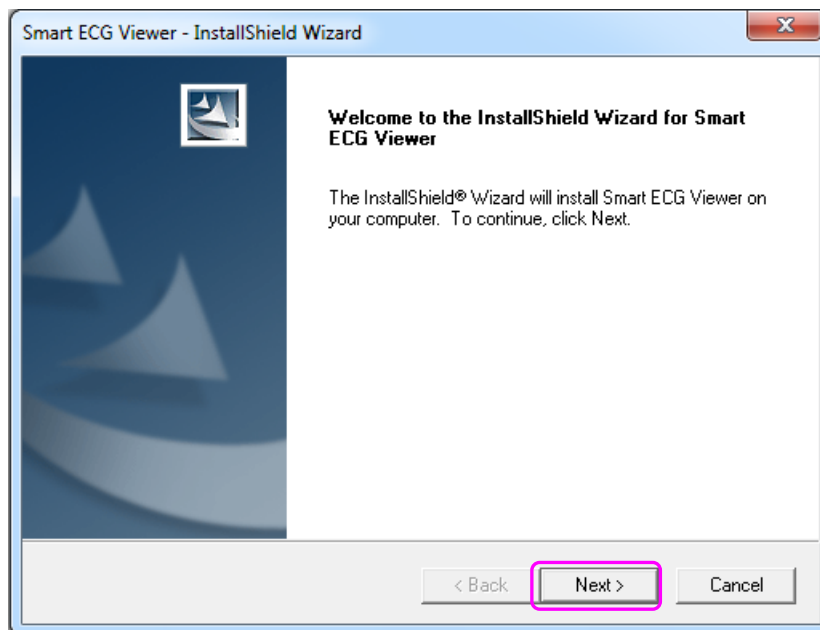
**NOTE:** In Windows 7 system, .NET Framework 2.0 has been installed in the system by default.

2. Click on the **Next** button. Select a language, and then click on the **OK** button.

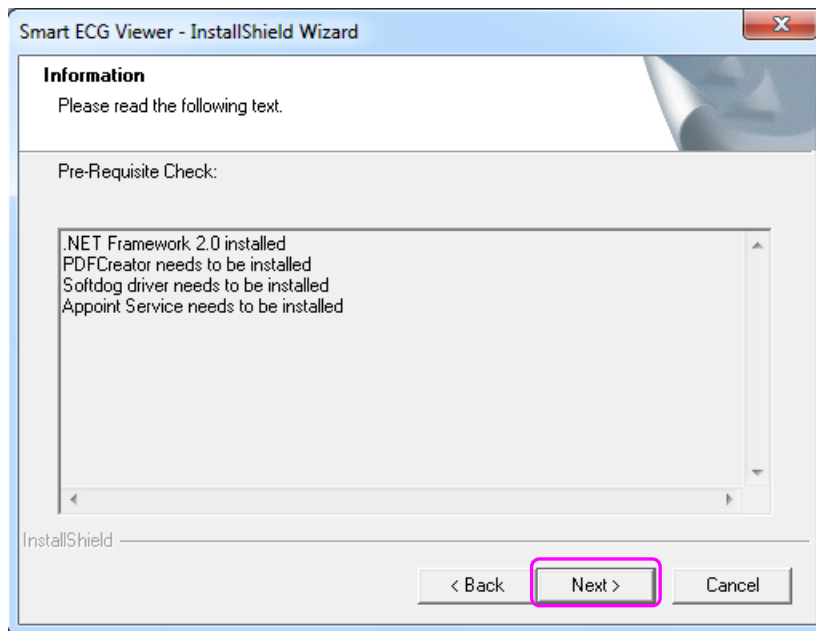




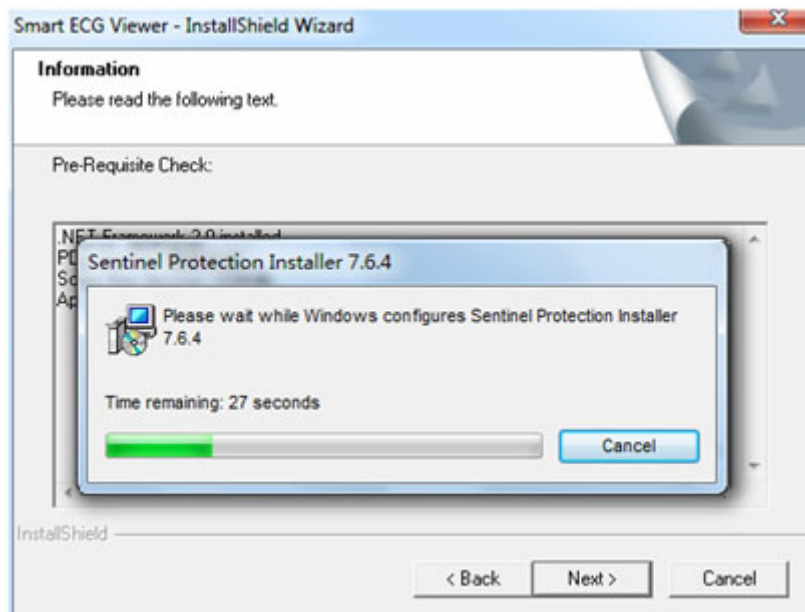
3. Click on the **Next >** button to continue.

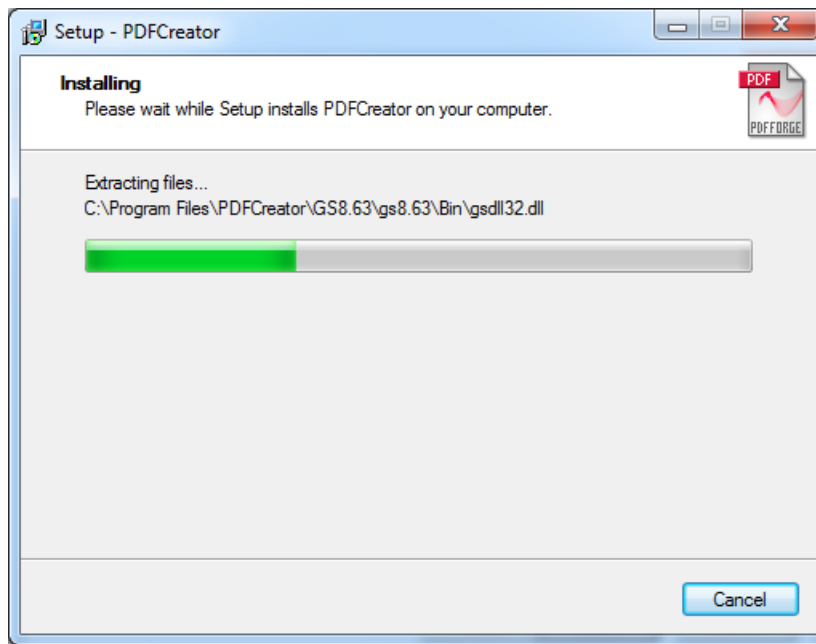


4. Click on the **Next >** button.

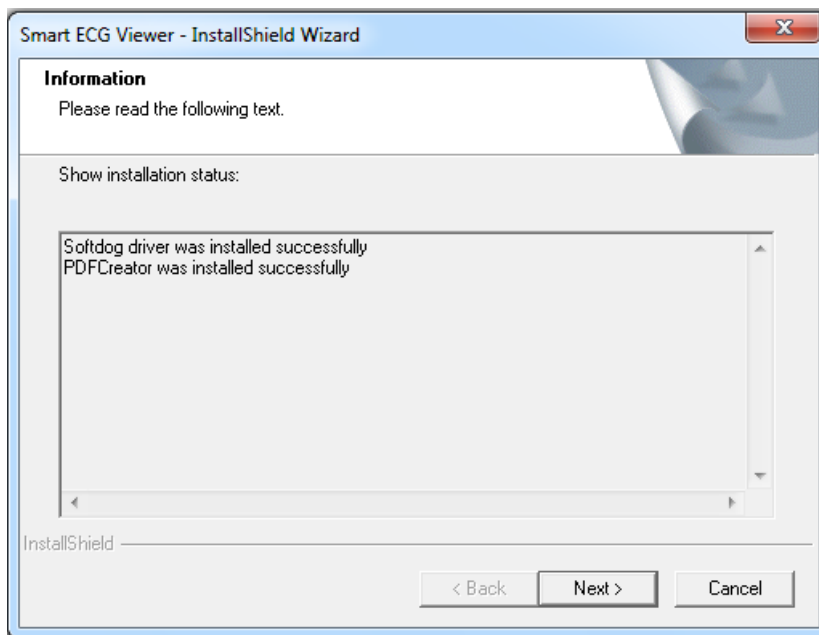


Smart ECG Viewer software and its components are ready to be installed.



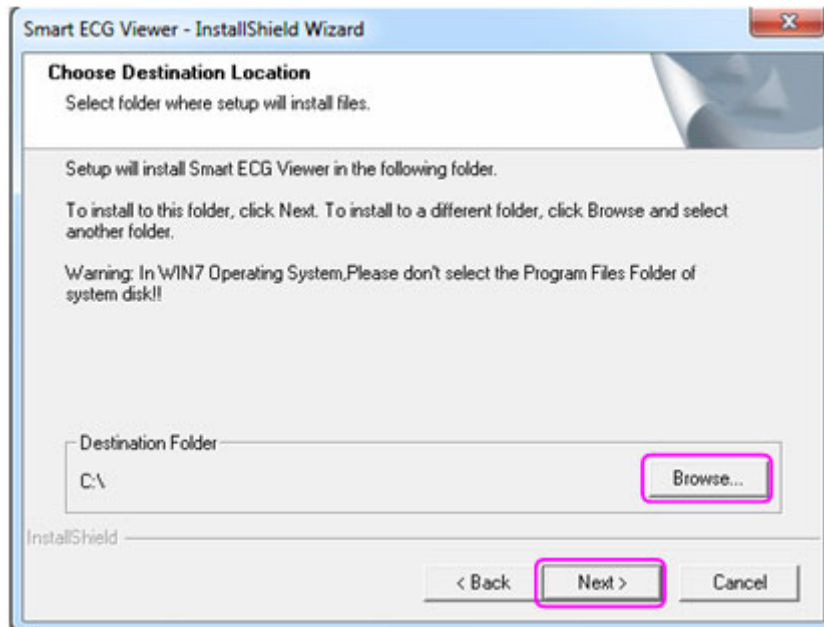


5. Click on the **Next >** button after the components are installed successfully.

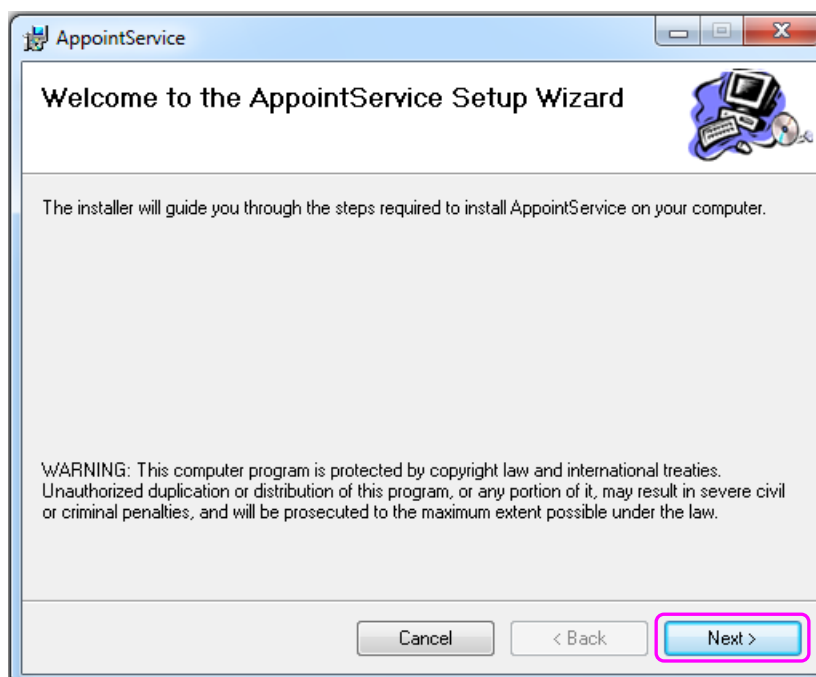


- Click on the **Next >** button to install Smart ECG Viewer software to the default folder.  
Or click on the **Browse...** button to choose the installation path, and then click on the **Next >** button to continue.

**NOTE:** Do not install the software to the **Program Files** folder of the system disk. Or else, the hint *Fail to create database!* may be displayed.

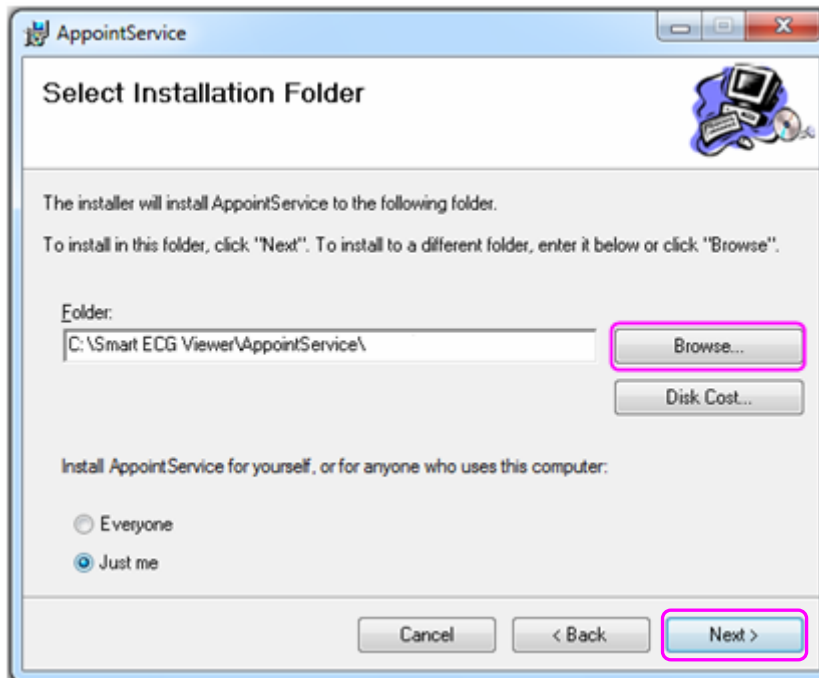


- Click on the **Next >** button to install AppointService.



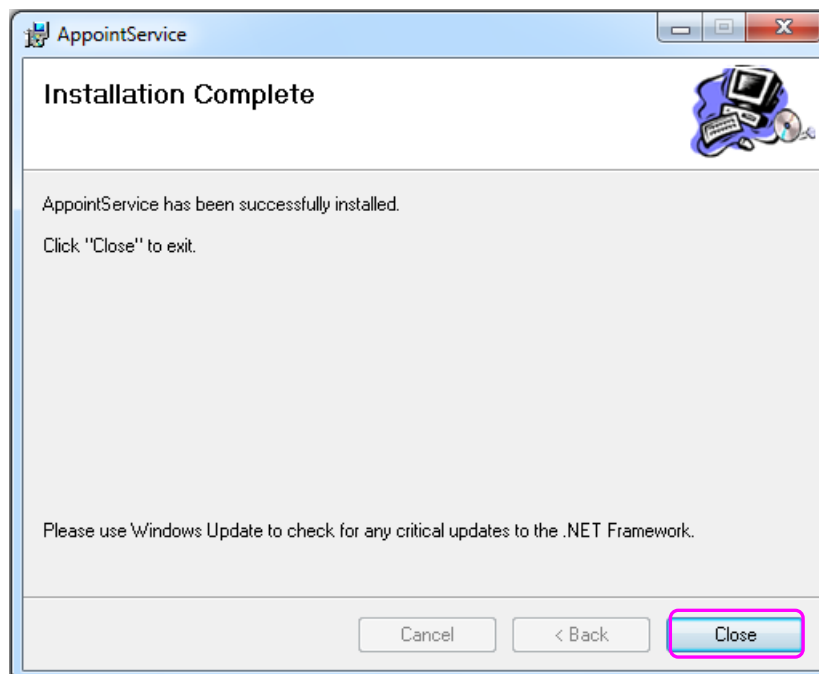


- Click on the **Next >** button to install AppointService to the default folder.

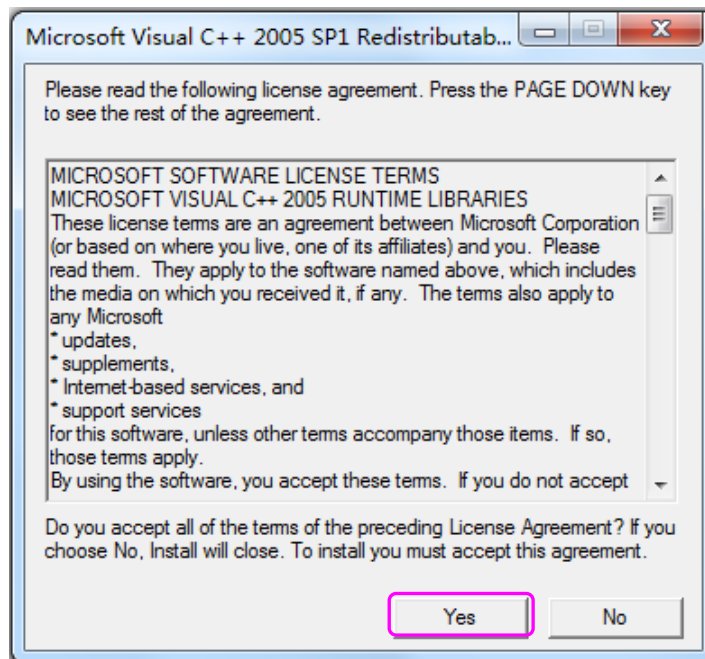


**NOTE:** Do not change the default folder of AppointService.

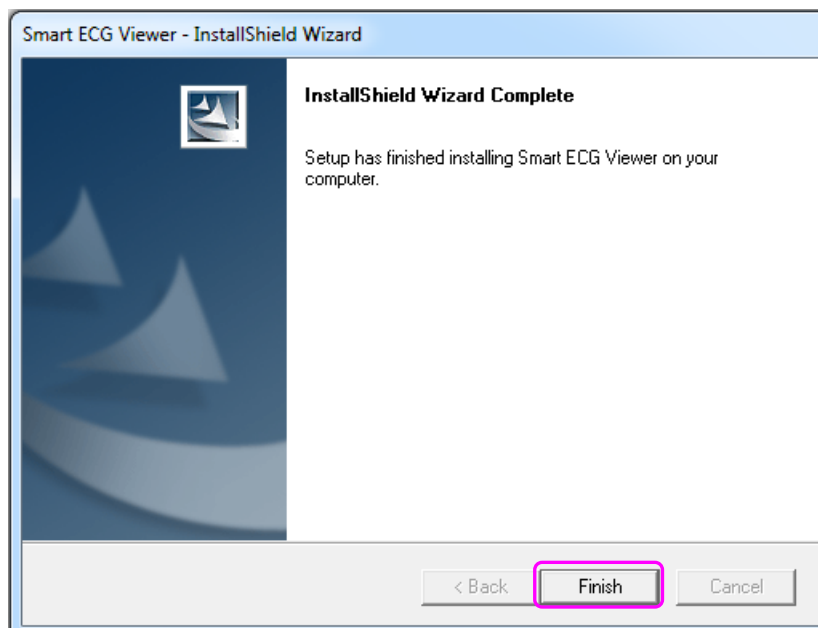
- Click on the **Close** button to complete AppointService installation.



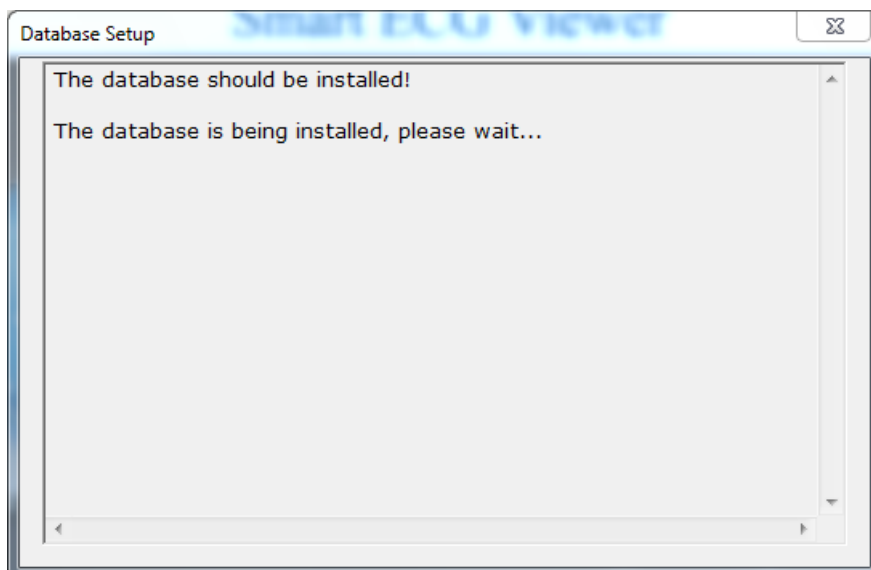
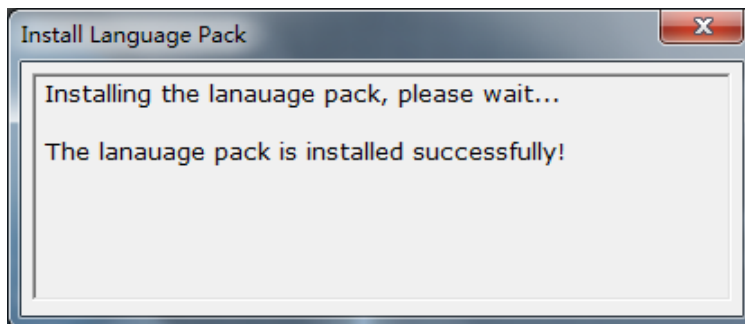
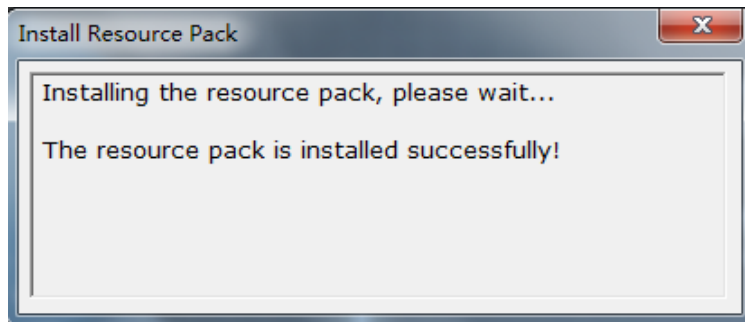
10. Click on the **Yes** button to install VS2005 SP1 redistributable pack.

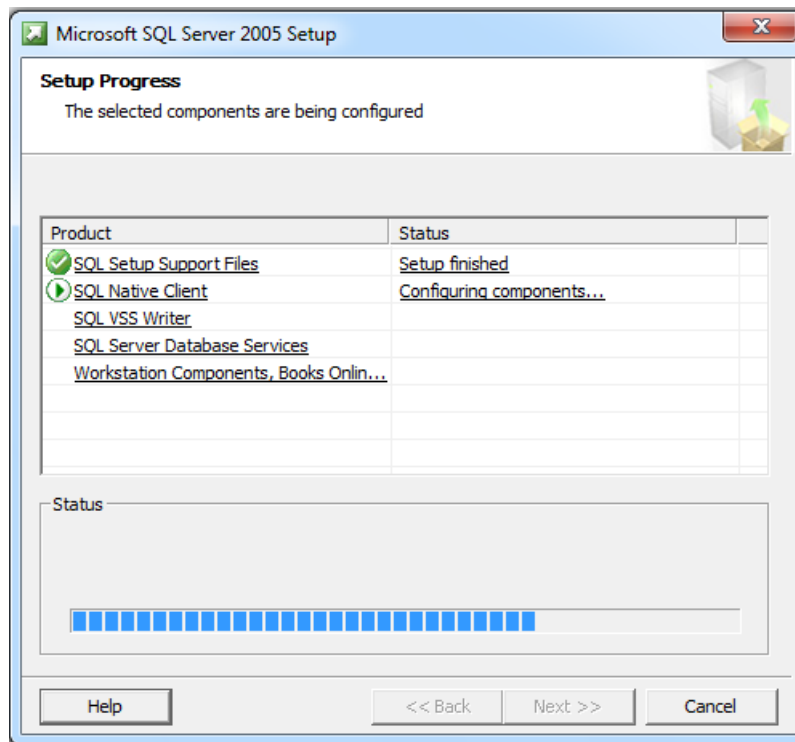
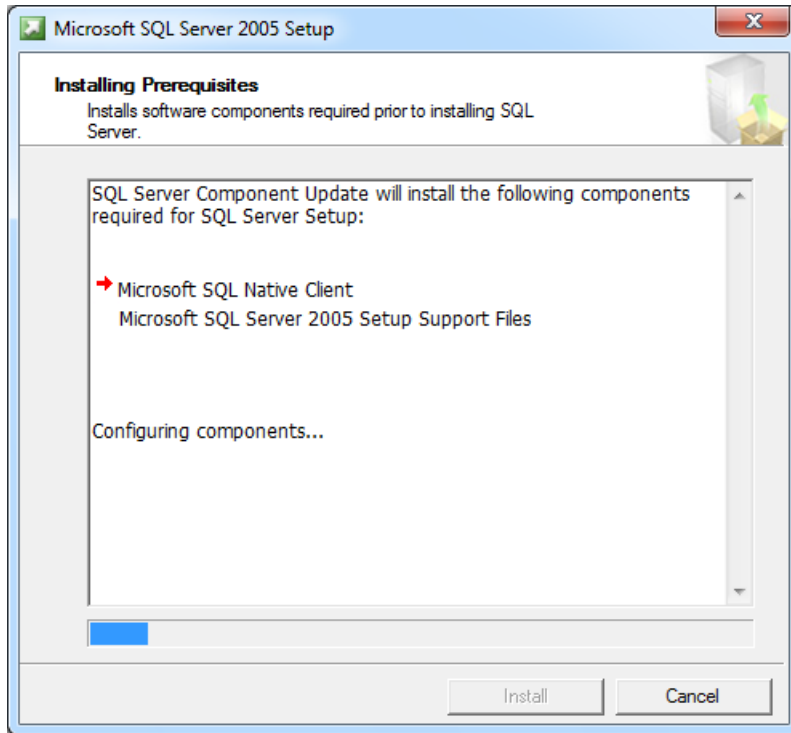


11. Click on the **Finish** button to finish Smart ECG Viewer installation.

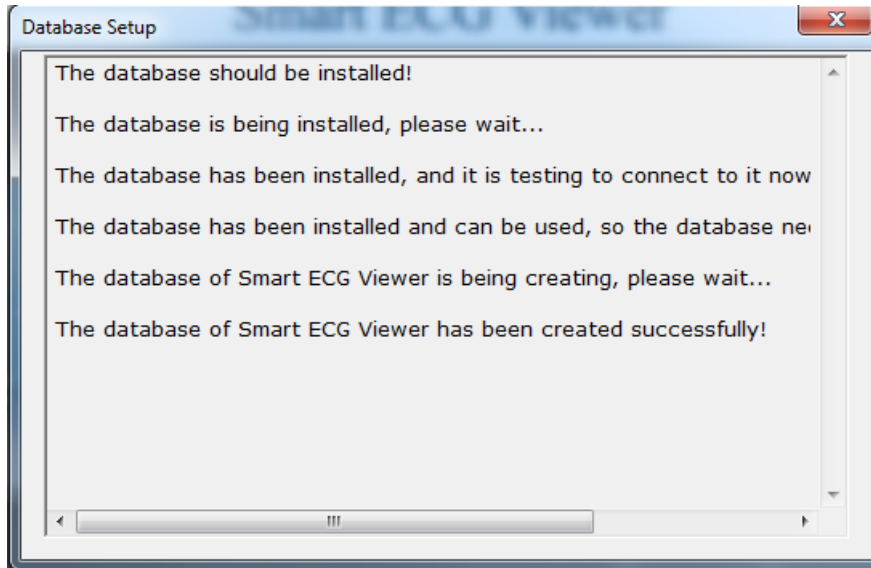


12. The system starts the installations of the resource pack, the language pack and the database installation if Smart ECG Viewer software and its components are installed successfully.





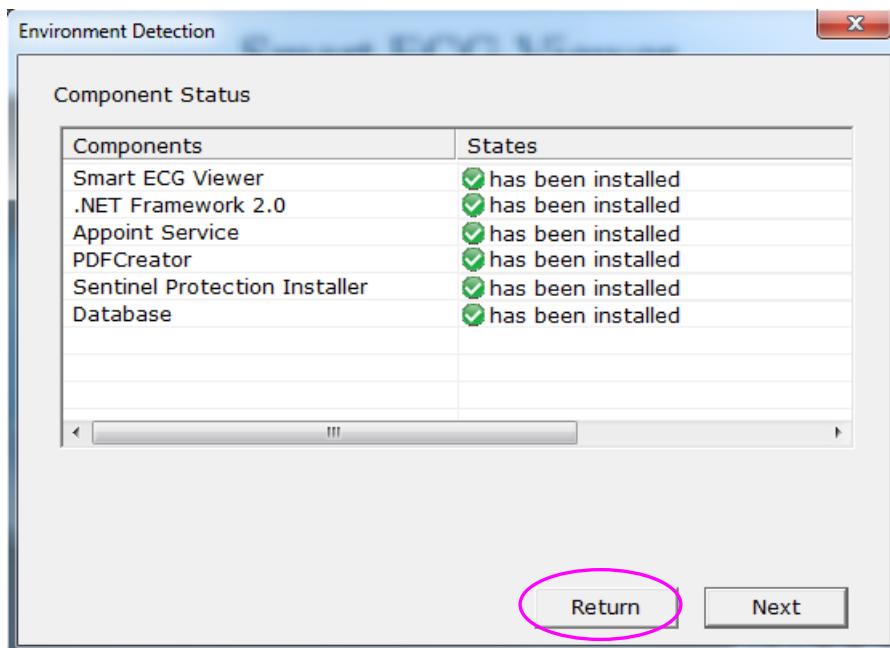
The database installation includes four procedures: the system detects whether the database needs to be installed → the database is installed → the system detects whether the database can be connected → Smart ECG Viewer database is created. During the four procedures, the system will respectively give hint information, as shown in the following picture:



## 2.2 Verifying the Installing Status

After installing Smart ECG Viewer, click on the **Install** button in the installation window (Figure 1). Then the **Environment Detection** window pops up. Check the installing status of all the components.

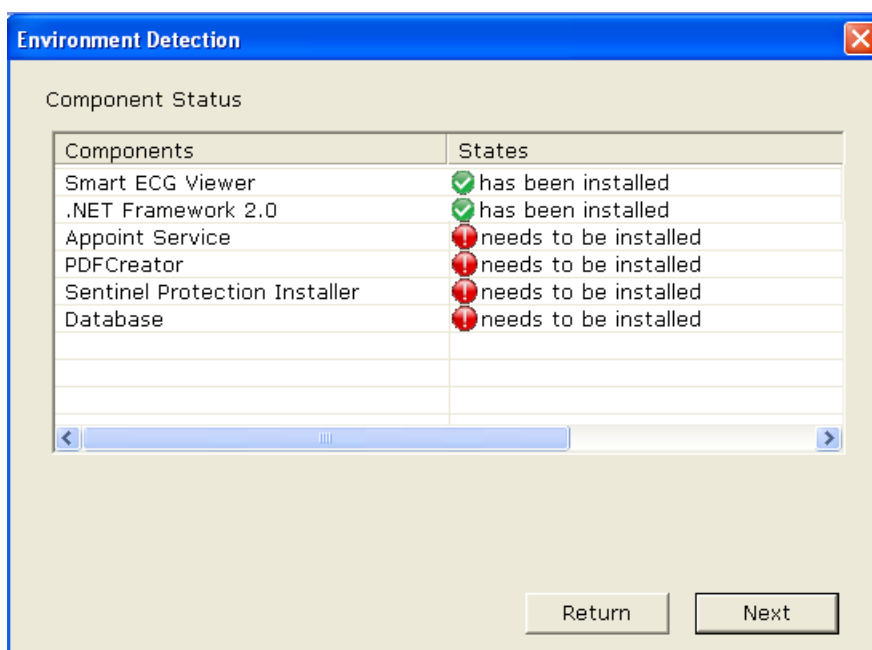
If all the components are installed successfully as the following figure shows, the installation of the components is completed. Click on the **Return** button.



If the **Environment Detection** window shows that a certain component needs to be installed, please install it manually. For details, please refer to Chapter 3.

### 3 Troubleshooting

After installing Smart ECG Viewer, click on the **Install** button in the installation window (Figure 1). Then the **Environment Detection** window pops up. You can uninstall Smart ECG Viewer and then click on the **Next** button if some component needs to be installed. Or, you can install the component manually.



Environment Detection Window

Phenomena	Causes	Solutions
<i>.Net Framework 2.0 needs to be installed</i> is displayed in the <b>Environment Detection</b> window.	.Net Framework 2.0 is not installed.	In Windows XP, install dotnetfx manually. For details, please refer to Section 3.1.
<i>Database needs to be installed</i> is displayed in the <b>Environment Detection</b> window.	Database is not installed.	<ol style="list-style-type: none"> <li>1. In Windows XP, install MSDE 2000 manually. For details, please refer to Section 3.2.</li> <li>2. In Windows 7, install SQL Server 2005 Express manually. For details, please refer to Section 3.3.</li> <li>3. Click on the <b>Next</b> button in the <b>Environment Detection</b> window to install the database.</li> </ol>

<p>Database: <i>Database is in conflict with ours, please remove it!</i> is displayed in the <b>Environment Detection</b> window.</p>	<ol style="list-style-type: none"> <li>1. Other database is installed in the system, and the password and the name of it are not the same as that of Smart ECG Viewer database.</li> <li>2. Database has been installed in the system before, but it is not uninstalled completely.</li> <li>3. SQL Server is paused manually.</li> </ol>	<ol style="list-style-type: none"> <li>1. If the database installed previously cannot work, click on <b>No</b> on the <b>Alert</b> hint to reinstall the database.</li> <li>2. If the database installed previously is not uninstalled completely, click on the <b>Next</b> button in the <b>Environment Detection</b> window, and then click on <b>Yes</b> on the prompt hint to uninstall the database.</li> </ol> <p><b>NOTE:</b> Ensure no other software in the system shares the SQL Sever database before you uninstall the database installed previously. If there is, please perform a backup of your data.</p> <ol style="list-style-type: none"> <li>3. If SQL Server is paused manually, stop installing the database, start up SQL Server, and then reinstall the database.</li> </ol>
<p><i>Sentinel Protection Installer needs to be installed</i> is displayed in the <b>Environment Detection</b> window.</p>	<p>Sentinel protection installer is not installed.</p>	<ol style="list-style-type: none"> <li>1. Install the sentinel manually. For details, please refer to Section 3.6.</li> <li>2. Click on the <b>Next</b> button in the <b>Environment Detection</b> window to install the sentinel.</li> </ol>
<p>Sentinel Protection Installer: <i>Old version of installed component, please remove it!</i> is displayed in the <b>Environment Detection</b> window.</p>	<p>Old version of the sentinel is installed.</p>	<ol style="list-style-type: none"> <li>1. Ignore this hint information if the old version can work.</li> <li>2. Reinstall the sentinel if the old version cannot work. For details, please refer to Section 3.6.</li> </ol>
<p><i>AppointService needs to be installed</i> is displayed in the <b>Environment Detection</b> window.</p>	<p>AppointService is not installed.</p>	<p>In Windows XP, install AppointService manually. For details, please refer to Section 3.7.</p>

<p><i>The process of AppointService is ended</i> is displayed in the <b>Environment Detection</b> window.</p>	<p>The process of AppointService is ended.</p>	<p>Start the process of AppointService. For details, please refer to Section 3.8.</p>
<p><i>PDFCreator needs to be installed</i> is displayed in the <b>Environment Detection</b> window.</p>	<p>PDFCreator is not installed.</p>	<ol style="list-style-type: none"> <li>1. Click on the <b>Next</b> button in the <b>Environment Detection</b> window to install the PDFCreator.</li> <li>2. Install PDFCreator manually. For details, please refer to Section 3.9.</li> </ol>
<p>PDFCreator: <i>Old version of installed component, please remove it!</i> is displayed in the <b>Environment Detection</b> window.</p>	<p>Old version of PDFCreator is installed.</p>	<p>Old version of PDFCreator is installed in your computer, please uninstall it on the control panel and restart the PC.</p>
<p>After installing the software in Windows 7, double-click on the Smart ECG Viewer shortcut icon. The hint <i>Fail to connect to the database, please make sure the SQL database is ON!</i> is displayed.</p>	<p>The process of the SQL database is ended.</p>	<p>Start the process of the SQL Server 2005 Express in Windows 7. For details, please refer to Section 3.5.</p>
<p>The bar code reader cannot be used.</p>	<p>Symbol COM Port Emulation Driver is not installed.</p>	<p>Install the Symbol COM Port Emulation Driver manually. For details, please refer to Section 3.10.</p>
<p>After installing the software in Windows XP, double-click on the Smart ECG Viewer shortcut icon. The hint <i>The</i></p>	<p>VS2005 SP1 redistributable pack is not installed.</p>	<p>In Windows XP, install VS2005 SP1 redistributable pack manually. For details, please refer to Section 3.11.</p>

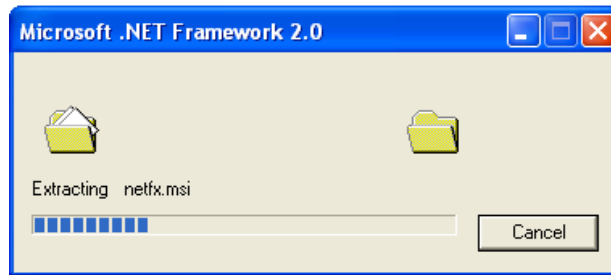


<p><i>application failed to initialize properly (0xc01500c2). Click on OK to terminate the application.</i> is displayed.</p>		
<p>After installing the software in Windows 7, double-click on the Smart ECG Viewer shortcut icon. The hint <i>Fail to create database!</i> is displayed.</p>	<p>Smart ECG Viewer database is not installed.</p>	<ol style="list-style-type: none"> <li>1. During installation in Windows 7, you installed Smart ECG Viewer to the <b>Program Files</b> folder of the system disk. Please uninstall Smart ECG Viewer software, and then install it to another path.</li> <li>2. During the manual installation of SQL Server 2005 Express, you did not select <b>Add user to the SQL Server Administrator role</b>. For details, please refer to Section 3.12.</li> </ol>
<p>After installing the sentinel or other software for the first time, insert the sentinel and double-click on the Smart ECG Viewer shortcut icon. The hint <i>Can't detect the Sentinel, enter DEMO or not?</i> is displayed.</p>	<p>The computer is not restarted.</p>	<p>Restart the computer, insert the sentinel, and then run the Smart ECG Viewer software.</p>

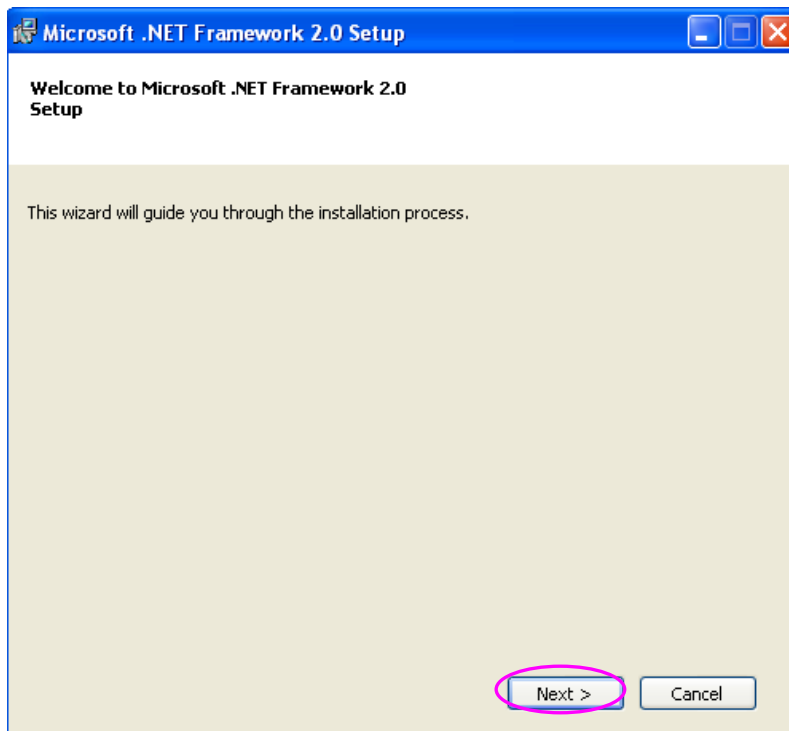
### 3.1 Installing Dotnetfx Manually

If *.Net Framework 2.0 needs to be installed* is displayed in the **Environment Detection** window, you should install dotnetfx manually.

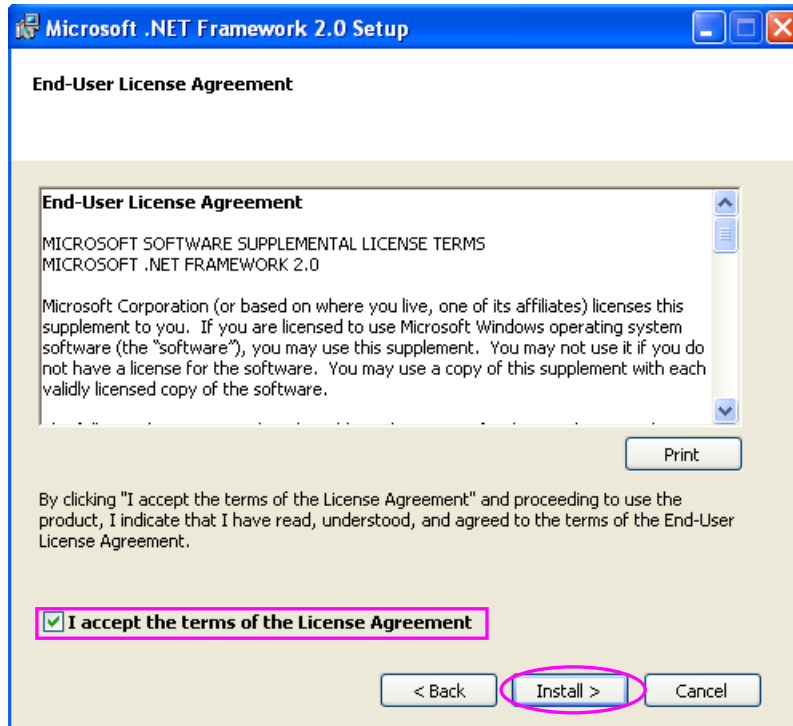
1. Double-click on  in the **dotnetfx** folder of the installation CD.



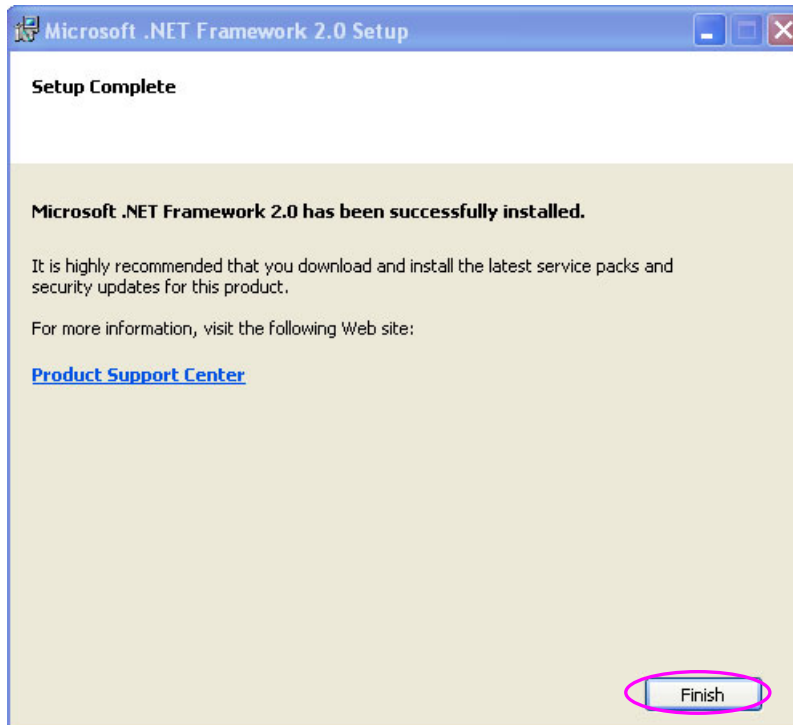
2. Click on the **Next >** button.



3. Select **I accept the terms of the License Agreement**, and then click on **Install >**.




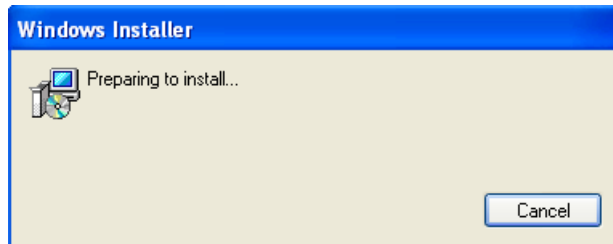
4. Click on the **Finish** button to complete the installation.



### 3.2 Installing MSDE 2000 Manually in Windows XP


If *Database needs to be installed* is displayed in the **Environment Detection** window, you should install MSDE 2000 manually.

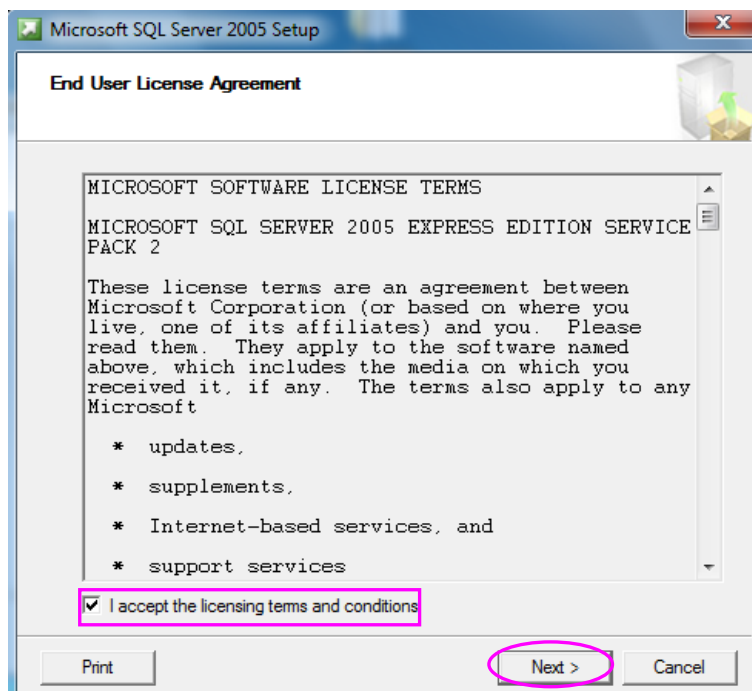
Double-click on  **setup**  
**SQL Server Setup**  
**Microsoft Corporation** in the directory of *Database\MSDE2000\MSDE2000A* of the installation CD.



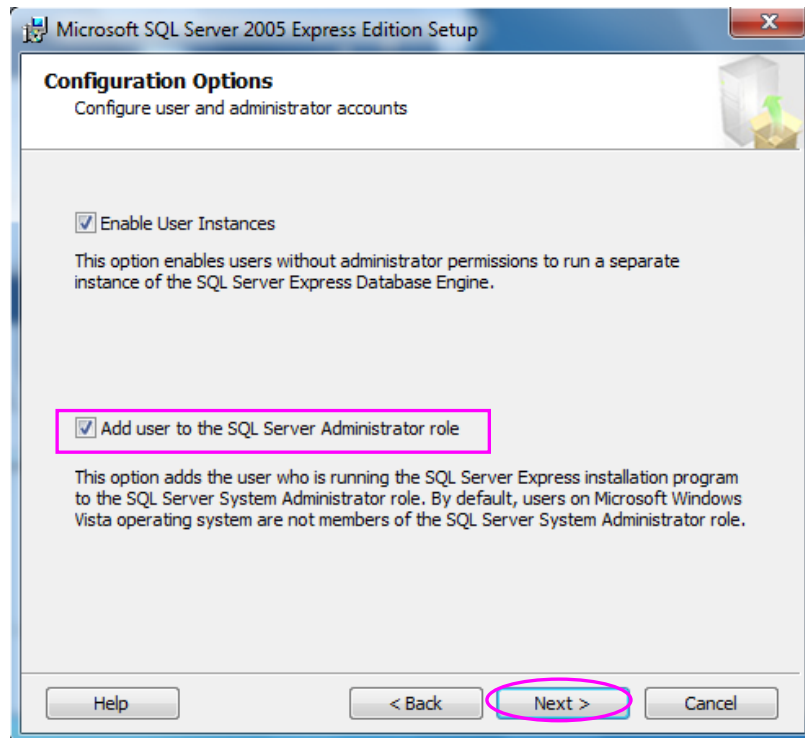
### 3.3 Installing SQL Server 2005 Express Manually in Windows 7

If *Database needs to be installed* is displayed in the **Environment Detection** window, you should install SQL Server 2005 Express manually.

1. Double-click on  **sqlexpr32.exe**  
**Microsoft SQL 20...**  
**Microsoft Corpor...** in the directory of *DataBase\2005express* of the installation CD.
2. Select **I accept the licensing terms and conditions**, and then click on the **Next >** button.



3. Perform as the hint information prompted by the system. Select **Add user to the SQL Server Administrator role** when you perform the following step.

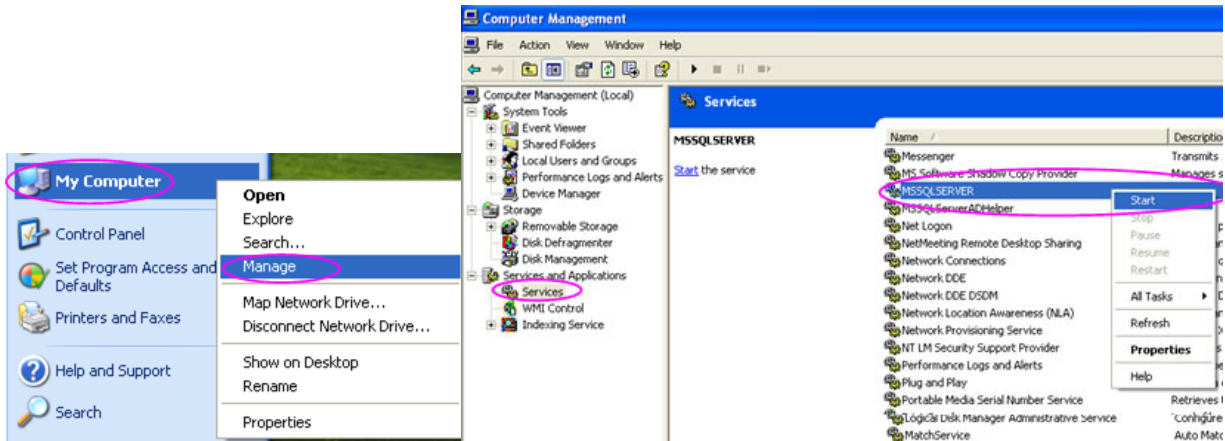



4. Perform as the hint information prompted by the system. At last, click on the **Finish** button to complete the database installation.

### 3.4 Starting up MSDE 2000 in Windows XP

After MSDE 2000 is installed successfully, you can start up MSDE in the following way:


1. Click on start, right-click on My Computer, and then select Manage in the pop-up menu to open the Computer Management window.
2. In the **Computer** Management window, double-click on **Services and Applications**, and then click on **Services**. If the status of **MSSQLSERVER** is not **Started**, right-click on **MSSQLSERVER**, and then select **Start** in the pop-up menu.

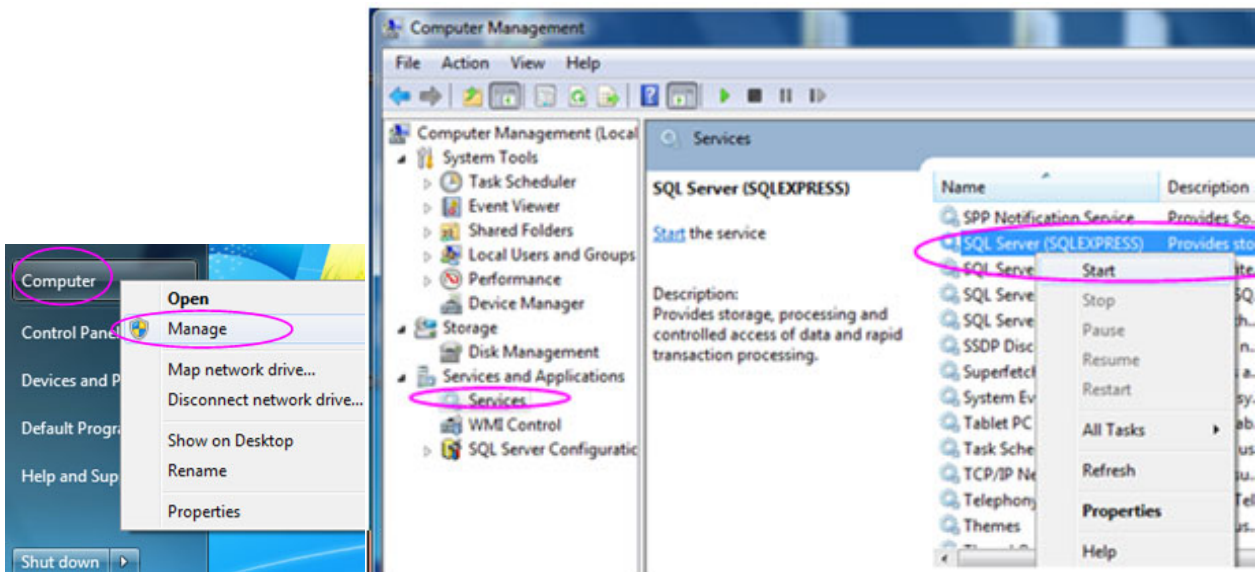


After MSDE 2000 is started up successfully, the SQL server icon  will appear in the bottom right corner of the desktop. The green triangle indicates that the server has been started up.

### 3.5 Starting up SQL Server 2005 Express in Windows 7


After SQL Server 2005 Express is installed successfully, you can start up SQL Server 2005 Express in the following way:

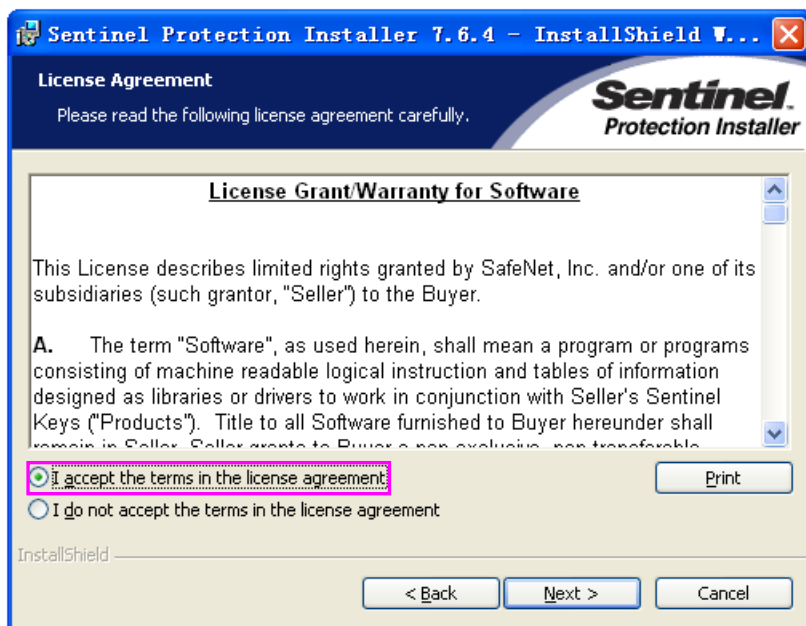
1. Click on , right-click on Computer, and then select Manage in the pop-up menu to open the Computer Management window.
2. In the **Computer Management** window, double-click on **Services and Applications**, and then click on **Services**. If the status of **SQL Server (SQLEXPRESS)** is not **Started**, right-click on **SQL Server (SQLEXPRESS)**, and then select **Start** in the pop-up menu.



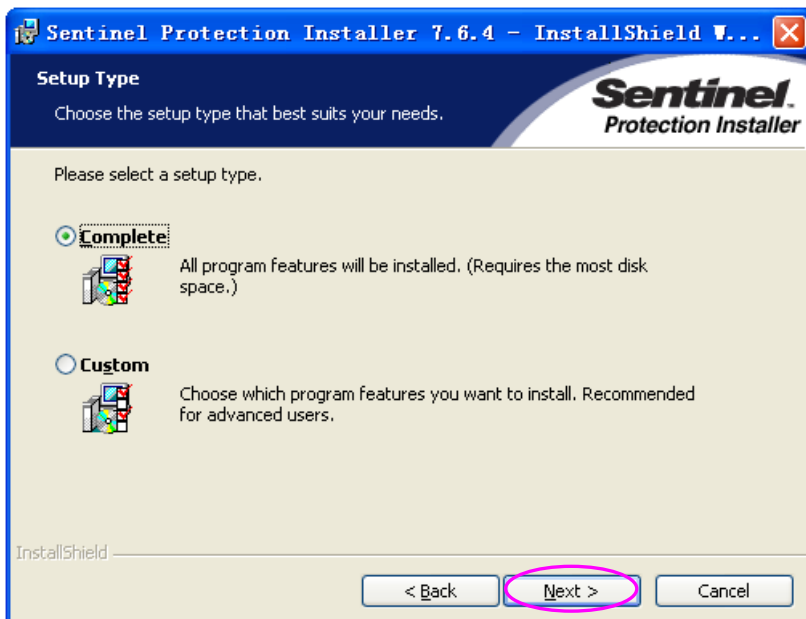
## 3.6 Installing Sentinel Manually

If *Sentinel Protection Installer needs to be installed* is displayed in the **Environment Detection** window, you should install the sentinel manually.

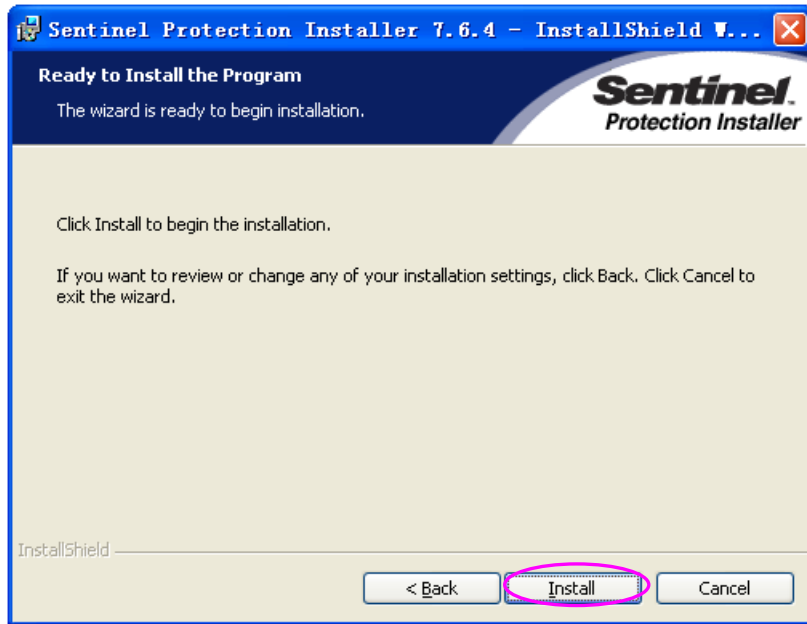
1. Double-click on  **setup** For use with any SafeNet har... SafeNet, Inc. in the **SPI761** folder of the installation CD.
2. Click on the **Next >** button.
3. Select **I acccept the terms in the license agreement**, and then click on the **Next >** button.



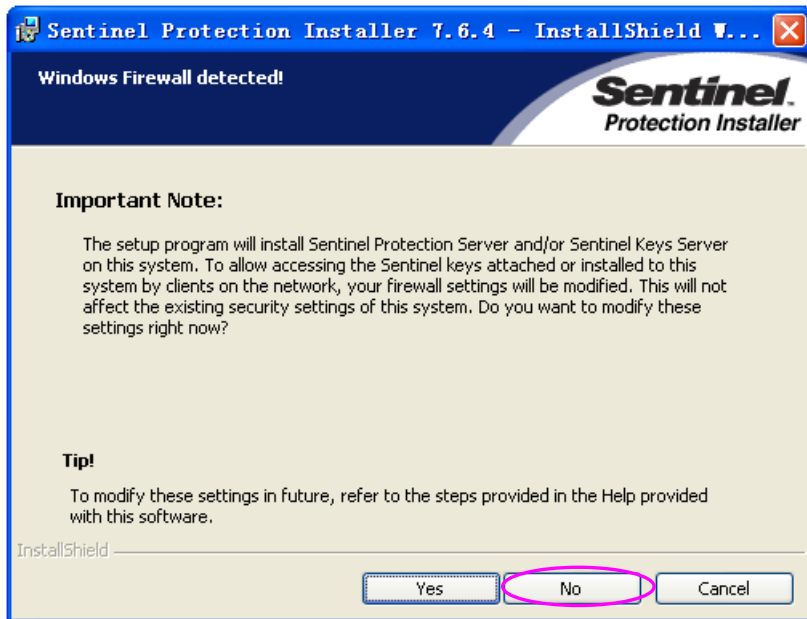
4. Click on the **Next >** button.



5. Click on the **Install** button.

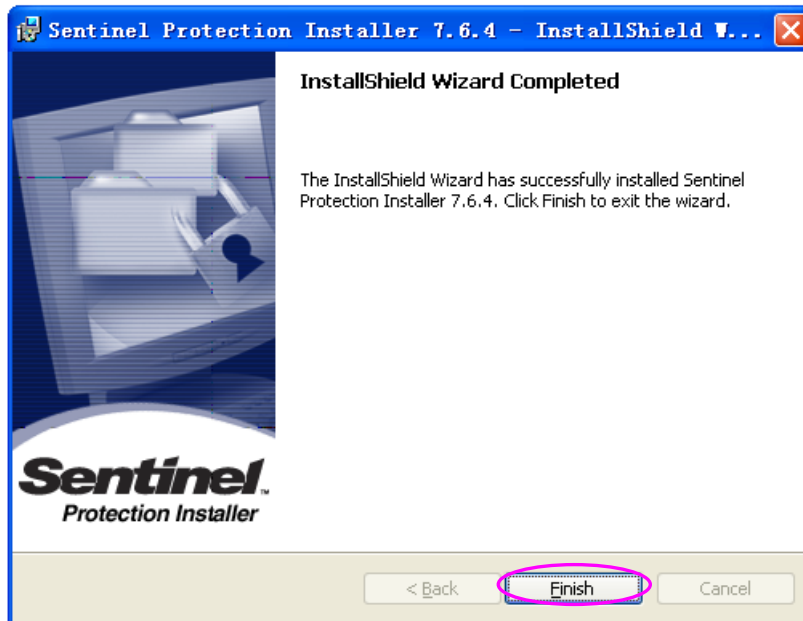


6. Click on the **No** button.






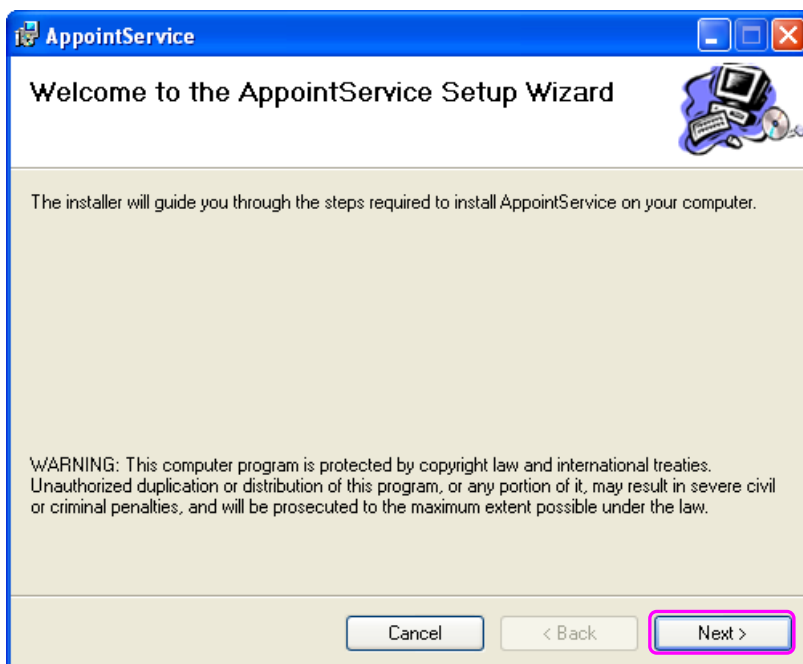
- Click on the **Finish** button, and then the sentinel installation is completed.



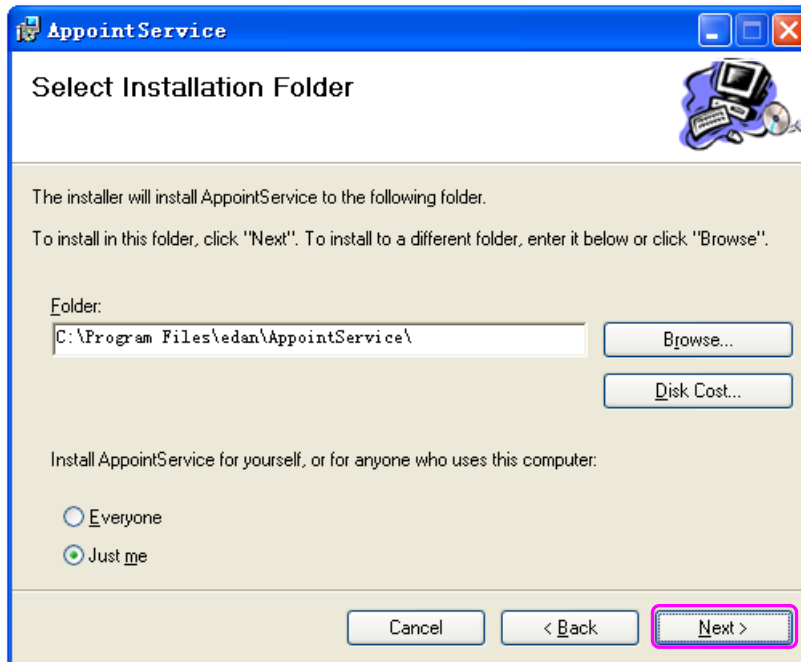
### 3.7 Installing AppointService Manually

If *AppointService needs to be installed* is displayed in the **Environment Detection** window, you should install AppointService manually.

- Double-click on  in the **AppointService** folder of the installation CD and then click on the **Next >** button.

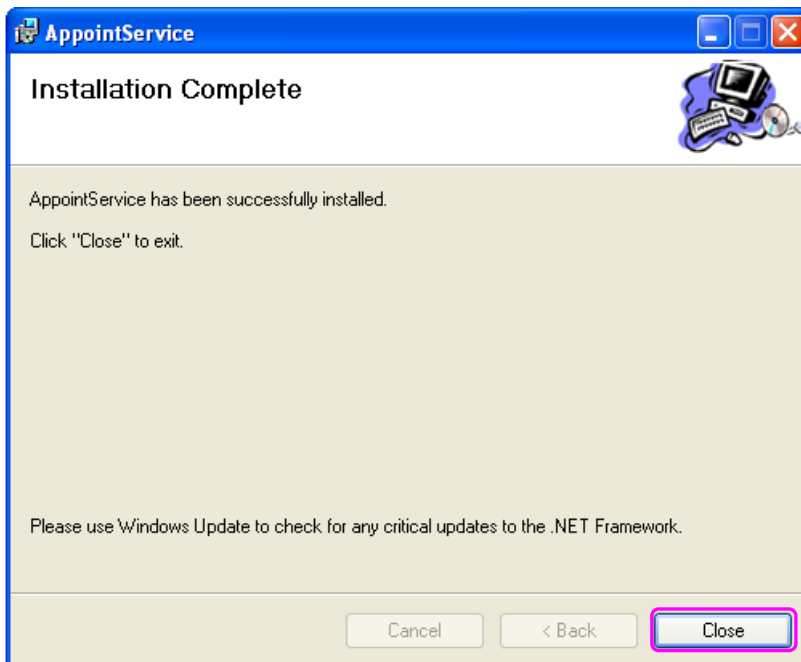


2. Click on the **Browse...** button to choose the installation path, and then click on the **Next >** button to continue.



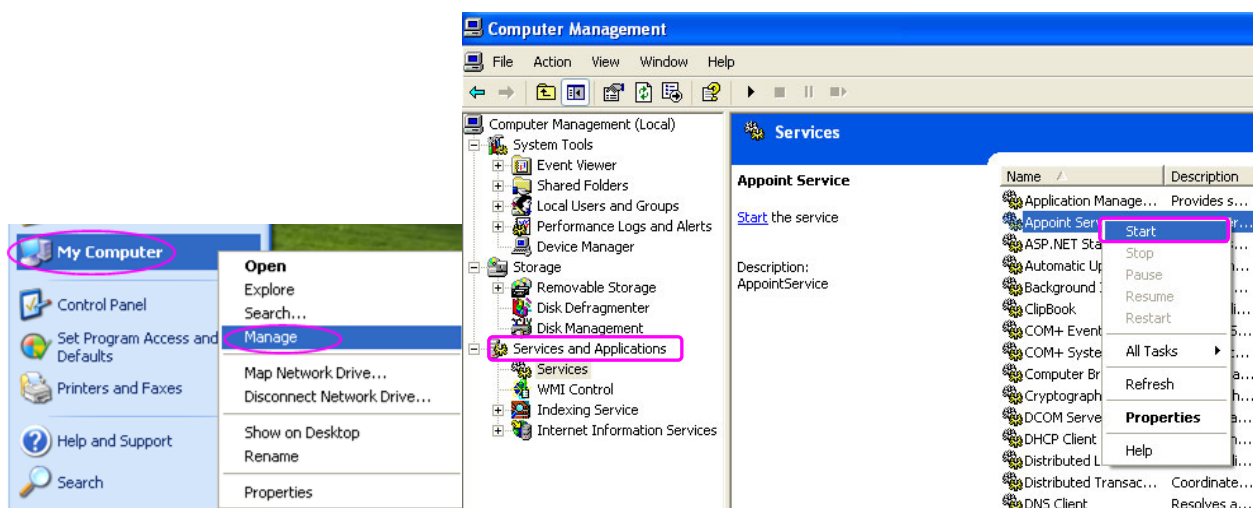
**NOTE:**

- 1) The default path must be changed to the installation path of Smart ECG Viewer. For example, if Smart ECG Viewer is installed in the path “D:\Smart ECG Viewer”, the installation path of AppointService you should enter is “D:\Smart ECG Viewer\AppointService\” to install AppointService.
- 2) You can enter the installation path manually.
3. Click on the **C**lose button to complete the installation.



### 3.8 Starting up AppointService

1. Click on **start**, right-click on **My Computer**, and then select **Manage** in the pop-up menu to open the **Computer Management** window.
2. In the **Computer Management** window, double-click on **Services and Applications**, click on **Services**, right-click on **AppointService**, and then select **Start** in the pop-up menu.




### 3.9 Installing PDFCreator Manually

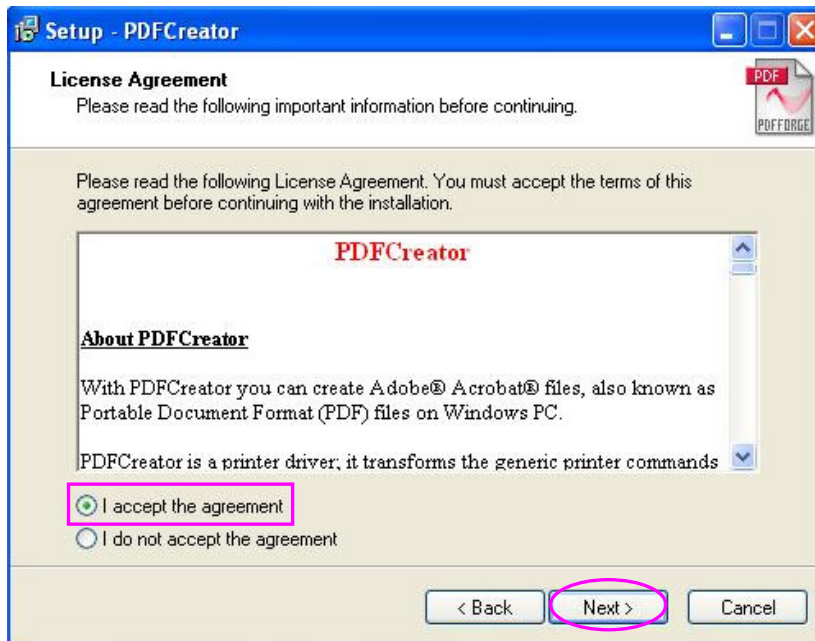
If *PDFCreator needs to be installed* is displayed in the **Environment Detection** window, you should install PDFCreator manually.

PDFCreator is used to create PDF documents. Only if it is installed, can the reports be saved in PDF format.

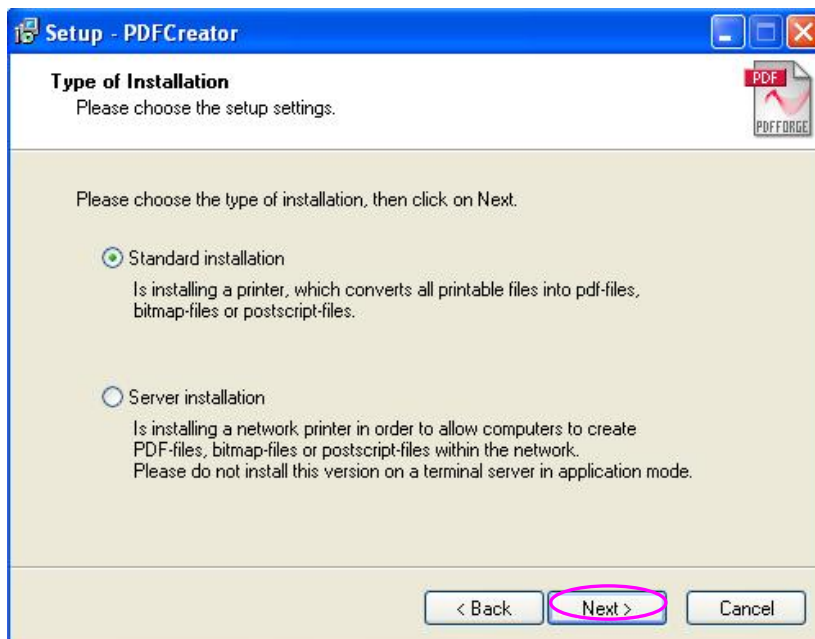


1. Double-click on  in the **PDFCreator** folder of the installation CD.
2. Select a language and click on the **OK** button.
3. Click on the **Next >** button.

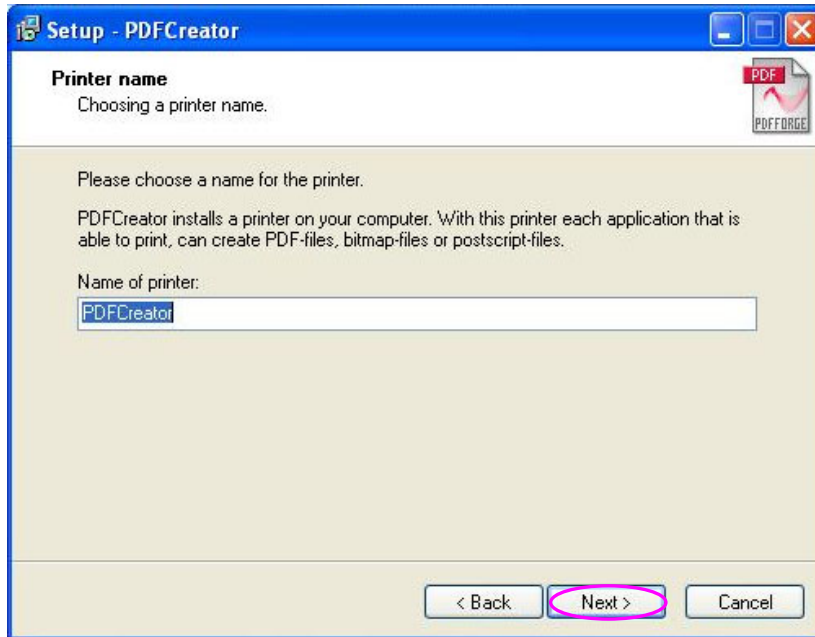
4. Select **I accept the agreement** and click on the **Next >** button.



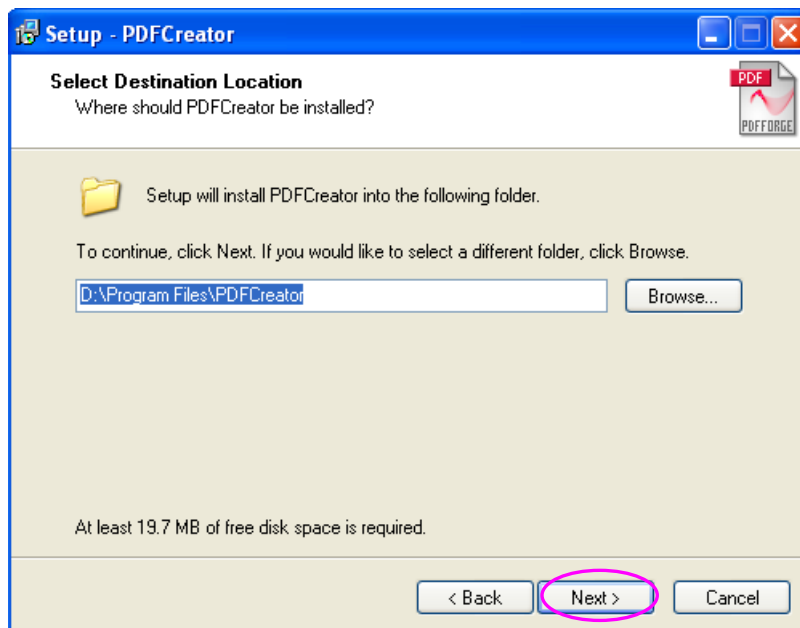
5. Click on the **Next >** button.



6. Click on the **Next >** button.

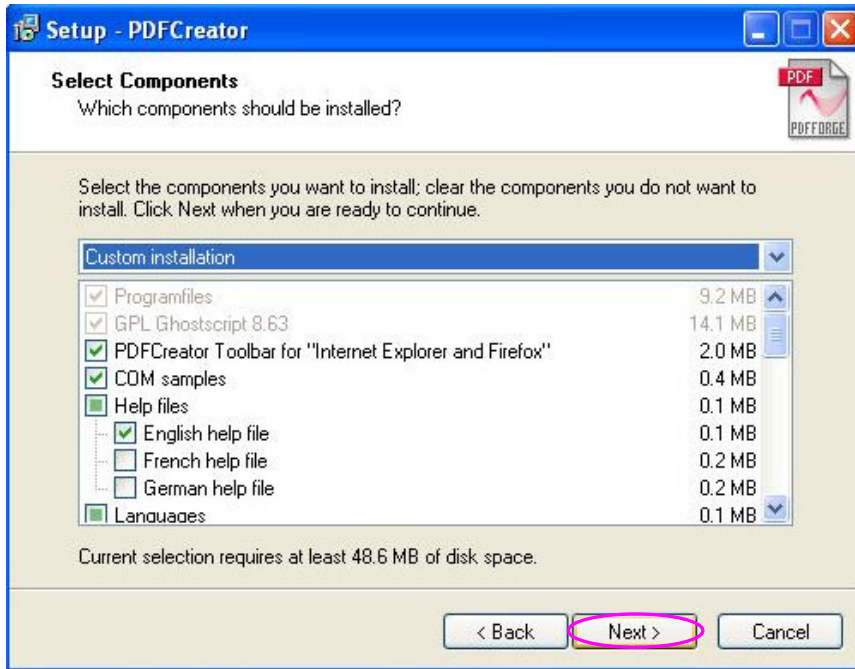


7. Click on the **Browse...** button and assign the installation path for PDFCreator, and then click on the **Next >** button.

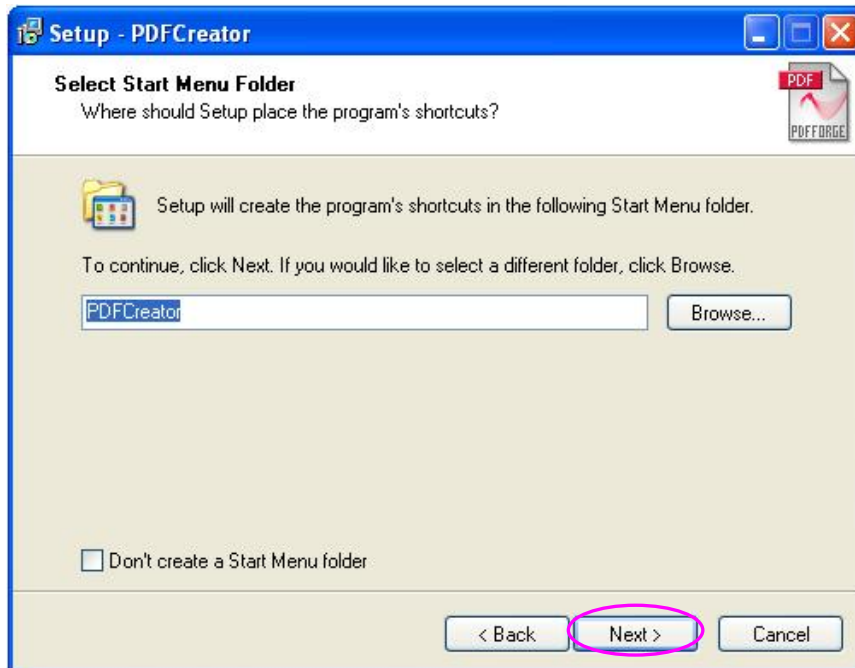


8. Click on the **Next >** button.

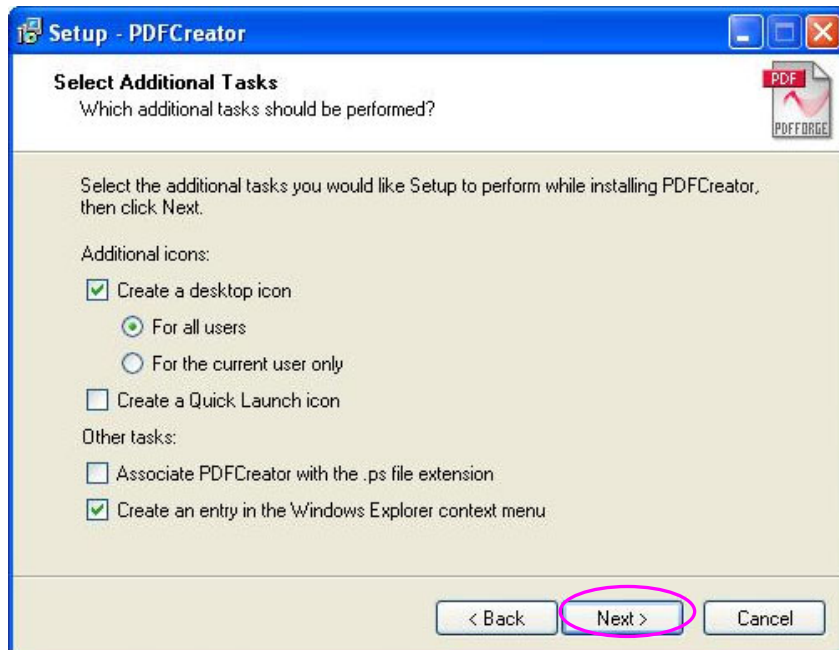
9. Click on the **Next >** button.



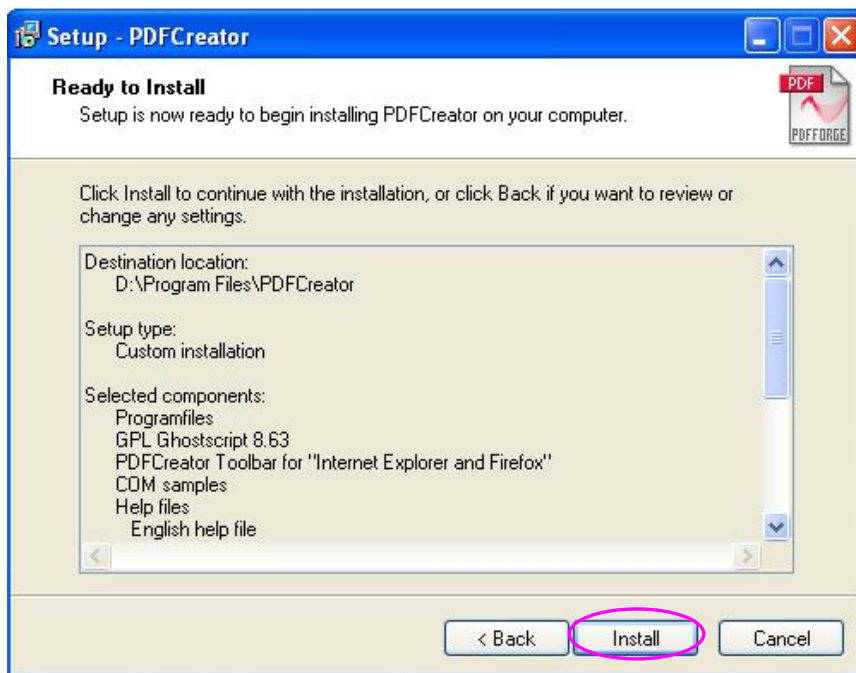
10. Click on the **Next >** button.



11. Click on the **Next >** button.




12. Click on the **Install** button.

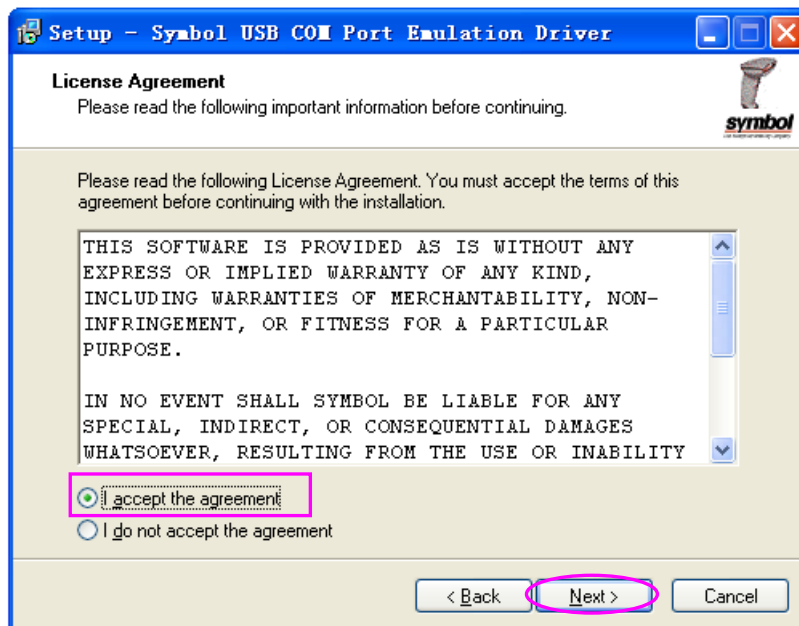


- Click on the **Finish** button to complete the installation.



### 3.10 Installing Symbol COM Port Emulation Driver Manually

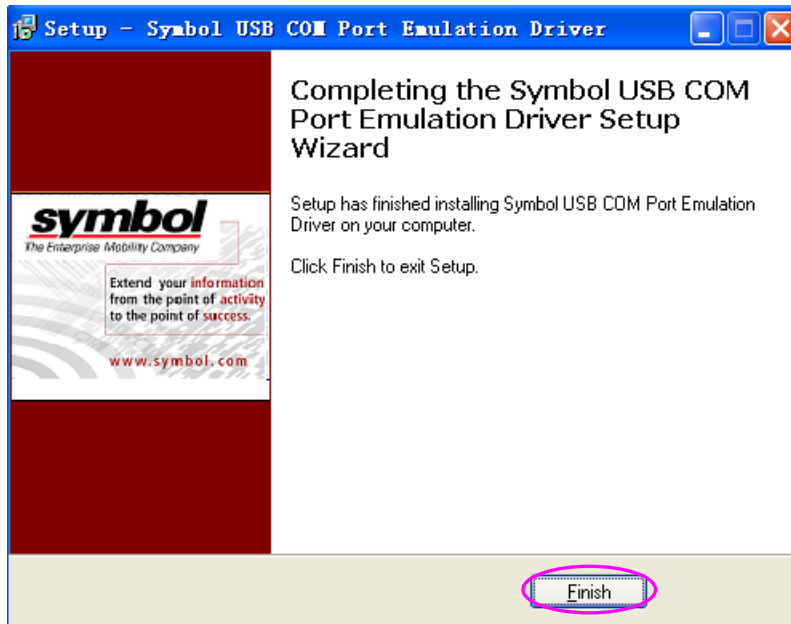
- Double-click on  in the directory of *BarcodeScanner driver\Symbol COM Port Emulation Driver* of the installation CD.
- Select **I accept the agreement**, and then click on the **Next >** button.



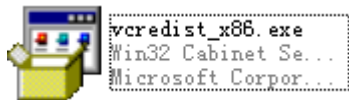
- Click on the **Next >** button.



- Click on the **Finish** button to complete the installation.



### 3.11 Installing VS2005 SP1 Redistributable Pack Manually




Double-click on  and then click on the **Yes** button to install.

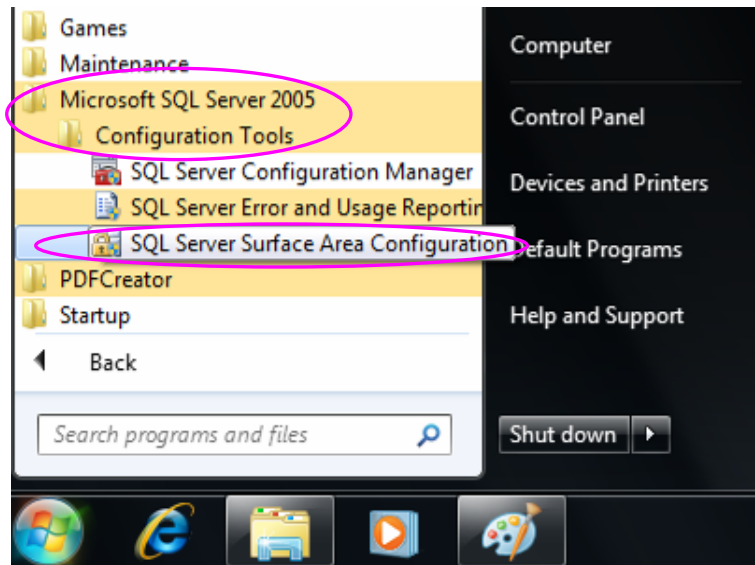
in the **VS2005 Redist** folder of the installation CD,

### 3.12 Adding SQL Server Administrator Role in Windows 7

During the installation of SQL Server 2005 Express, if you do not select **Add user to the SQL Server Administrator role**, the database is unavailable. After installing the software in Windows 7, double-click on the Smart ECG Viewer shortcut icon. The hint *Fail to create database!* is displayed.

The solution is as follows:

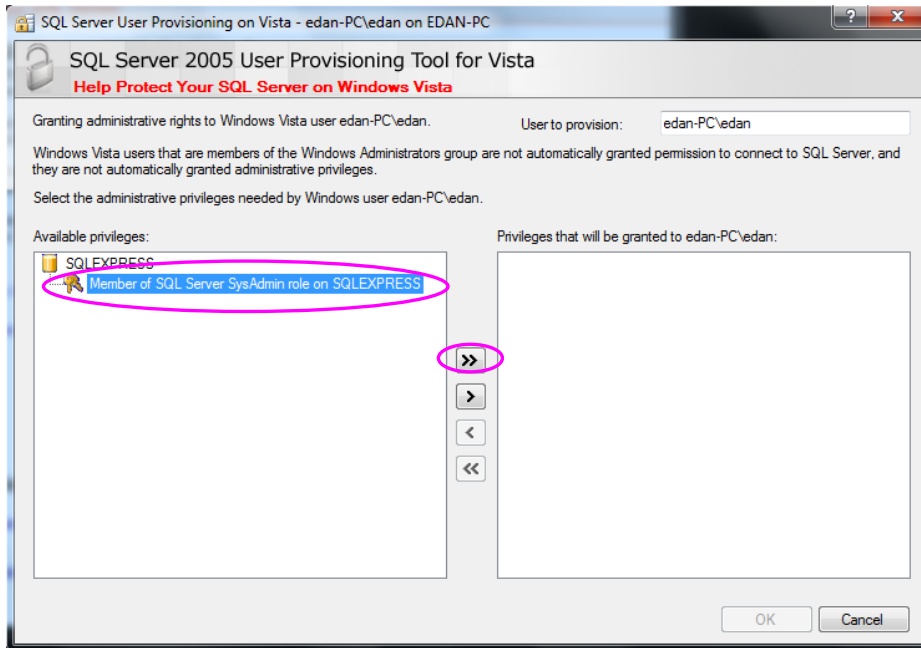
- Click on , and then click on **All Programs**.
- Choose **Microsoft SQL Server 2005 > Configuration Tools > SQL Server Surface Area Configuration**.



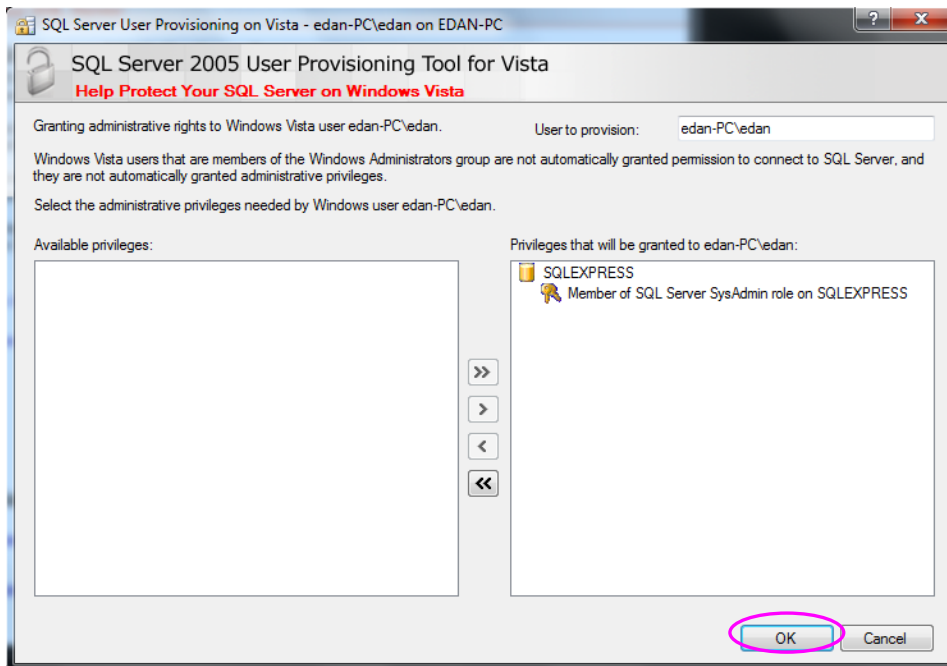
3. Click on **Add New Administrator**.



4. Select **Member of SQL Server SysAdmin role on SQLEXPRESS**, and then click on .



5. Click on the **OK** button.

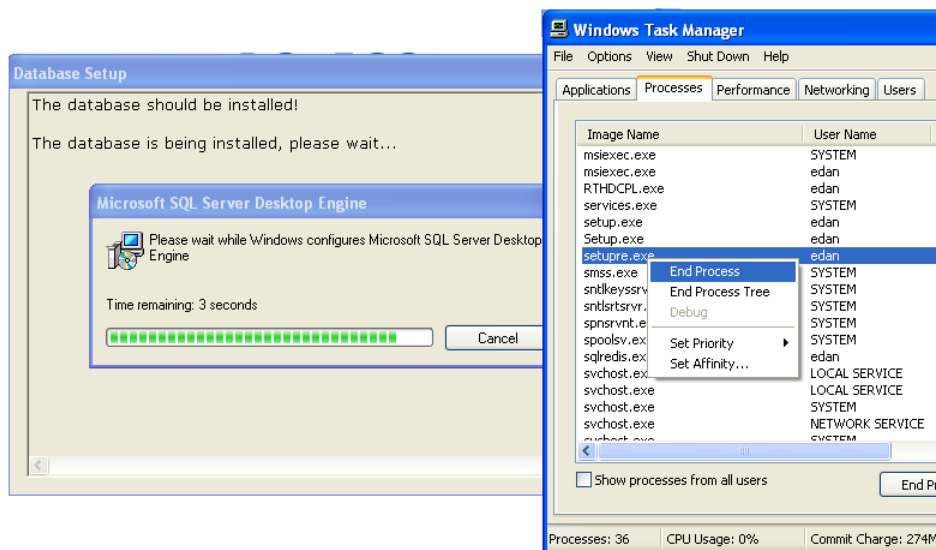


## 4 Troubleshooting of Database Installation

The system starts an independent installation procedure for database installation after the Smart ECG Viewer software and its components are installed successfully. You should detect whether available database has been installed before the database installation. The following solutions can help you if you meet troubles during the database installation.

**Q1: How should I deal with the process bar when it doesn't move for a long time during MSDE installation?**

**A1:** You can end the process of setupre.exe in the **Windows Task Manager** window.



**Q2: The SQL2000 has been installed in Windows XP system but it cannot work, what should I do?**

**A2:** If the SQL2000 has been installed in Windows XP system but it cannot work, you need to uninstall the SQL2000 or MSDE on the control panel, and then start the Smart ECG Viewer installation to install the database.

**Q3: The SQL2005 has been installed in Window 7 system but it cannot be started, what should I do?**

**A3:** If the SQL2005 has been installed in Windows 7 system but it cannot be started, you need to uninstall the SQL2005 database on the control panel, and then start the Smart ECG Viewer installation to install the database. You need to restart the PC if the system gives hint information for a complete uninstallation.

***Q4: Do I need to have administrator permission during the database installation?***

**A4:** You should have administrator permission during the database installation; otherwise, you can not install the database.

***Q5: Do I need to have any special account during the database installation?***

**A5:** If you use an administrator account during the SQL2005 installation, the system will change your account to another after the database is installed. You should add the current account in the database administrator to connect with the database. For details, please refer to Section 3.8.

***Q6: I have uninstalled the Microsoft SQL Server 2005 in Windows 7 system. Why the installation window gives hint information that the database still exists in the system?***

**A6:** If you want to uninstall the SQL2005 database, you should first uninstall the components of Microsoft SQL Server, and then uninstall other components. If you do not uninstall the SQL2005 database in this way, the next installation will be affected because of an incomplete uninstallation

P/N: 01.54.456525-10



Manufacturer

EC REPRESENTATIVE

Shanghai International Holding Corp. GmbH (Europe)

Eiffestrasse 80, D-20537 Hamburg Germany

TEL: +49-40-2513175 FAX: +49-40-255726

E-mail: antonjin@yahoo.com.cn

EDAN INSTRUMENTS, INC.

3/F-B, Nanshan Medical Equipments Park, Nanhai Rd 1019#,

Shekou, Nanshan Shenzhen, 518067 P.R. CHINA

Email: info@edan.com.cn

TEL: +86-755-2689 8326 FAX: +86-755-2689 8330