

A Clear Vision

Ultrasound reimaged

Born of a vision to deliver meaningful design innovations that benefit the user, Acclarix features a host of design breakthroughs that make day-to-day operation easy, fast and intuitive. The result is an elegant simplicity where form and function meet at the tips of your fingers.

- Unparalleled image quality with one-key optimization for all modes
- Needle Visualization Technology improves needle identification - even at steep angles
- Application-specific exam and imaging presets simplifies operation allowing more focus on the patient

Motorized height adjustment with 20-cm travel delivers a flexible ergonomic scanning position



Customizable touch screen user interface personalizes workflow



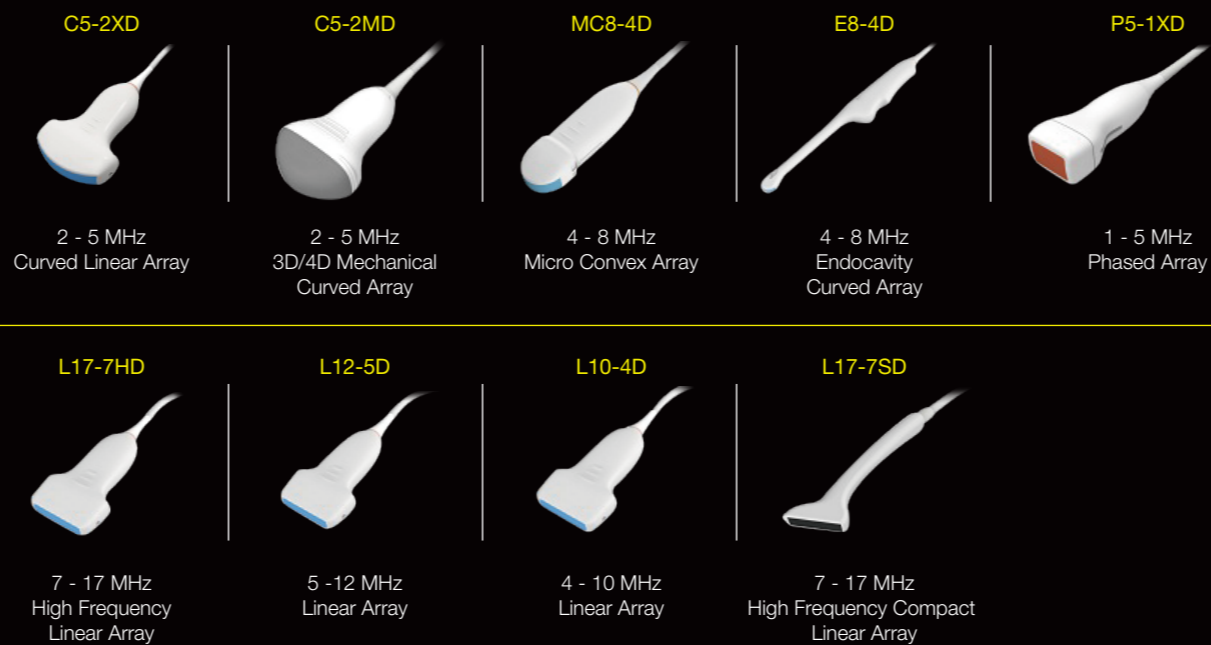
Four active transducer ports so the transducer you need is always ready to use



Down lit pull-out keyboard provides flexibility for annotations and data entry



Transducer Specifics



About Edan

Edan is a healthcare company dedicated to improving the human condition around the world by delivering value-driven, innovative and high-quality medical products and services. For over 20 years, Edan has been pioneering a comprehensive line of medical solutions that address a broad range of healthcare practices including:

- Diagnostic ECG
- Ultrasound Imaging
- In-Vitro Diagnostics
- Patient Monitoring
- Point-of-Care Testing

Healthcare professionals around the world depend on Edan's breakthrough medical technologies and outstanding customer support.



U.S. inquiries:
 EDAN Diagnostics, Inc. | 9833 Pacific Heights Blvd., Suite E/F
 San Diego, CA 92121-4707 | +1.858.750.3066
www.edandiagnostics.com | edan-info@edandiagnostics.com

Inquiries outside of the U.S.:
 Edan Instruments, Inc. | 3/F-B, Nanshan Medical Equipments Park,
 1019# Nanhai Rd., Shenzhen | 518067 P.R. China
 +86.755.26898326 | www.edan.com.cn | info@edan.com.cn

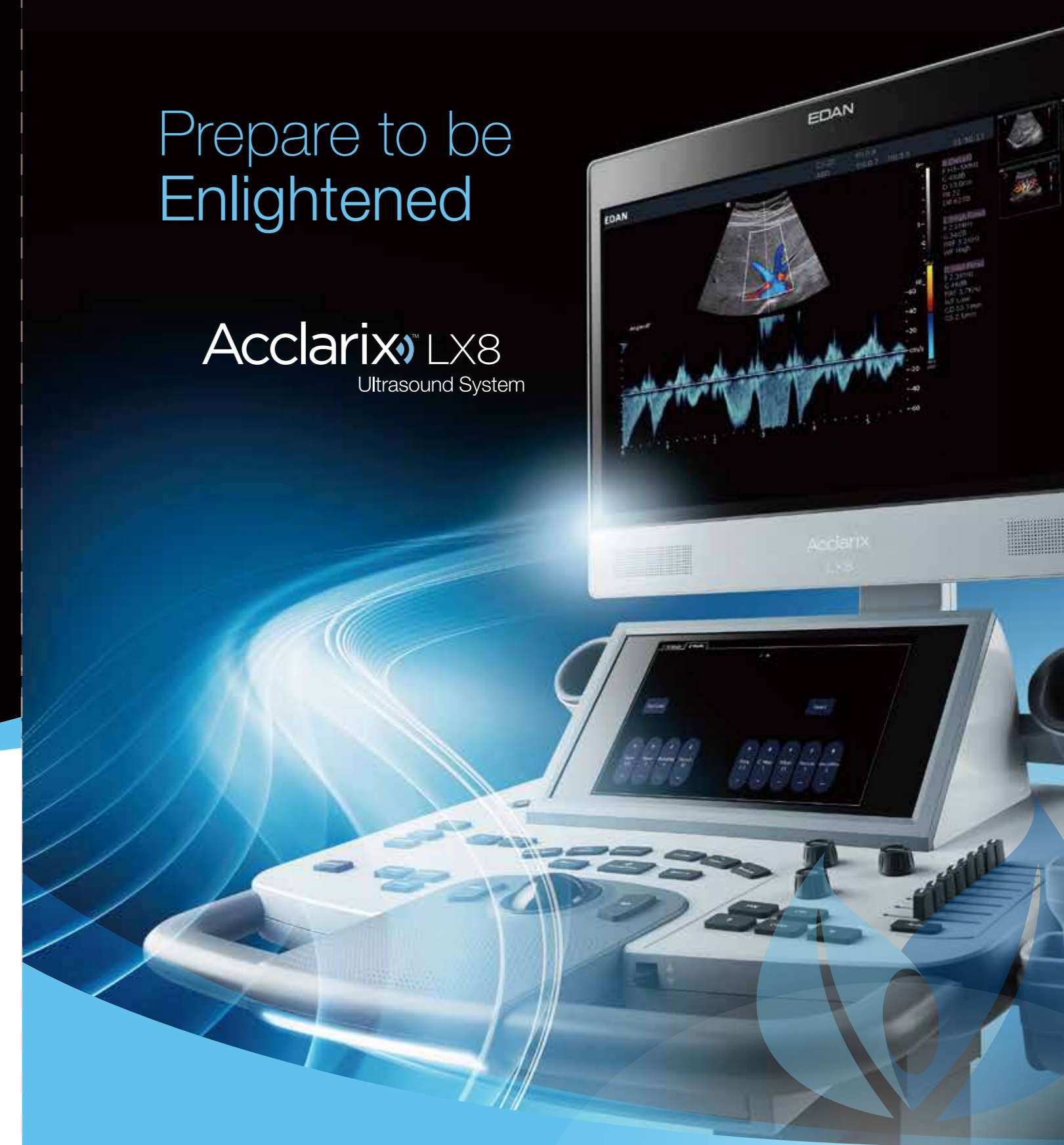


ENG-US-LX8-V1.1-20160614

© 2015 Edan Instruments, Inc. All rights reserved. Features and specifications are subject to change without prior notice. No reproduction, copy or transmission may be made without written permission. Not all products or features are available in all territories, contact Edan for local availability.

Prepare to be Enlightened

Acclarix[™] LX8 Ultrasound System





Singularly Flexible.
Uniquely Powerful.

3D/4D imaging on the LX8 system includes a complete suite of rendering and editing tools ensuring maximum results



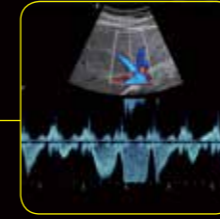
Adaptive color Doppler provides exquisite sensitivity and detail resolution with minimal user optimization required as seen in this normal kidney



Tissue Adaptive Imaging with the L17-7HD transducer delivers exceptional contrast and detail resolution in this evaluation of a thyroid lesion



Superb performance of color and spectral Doppler is demonstrated in this view of the hepatic vein confluence



Versatility & innovation meet value & performance

When it comes to power, performance, innovation and flexibility - there is one ultrasound system that delivers more. Designed specifically to address the challenges of busy ultrasound environments, the Acclarix™ LX8 Ultrasound System features a host of design breakthroughs that make day-to-day operation easy, fast and intuitive.

- User customizable 10" touch screen with gesture control user interface
- 21" tilt-and swivel, HD wide-screen anti-glare LCD monitor
- Four-wheel pivot for easy maneuverability in tight spaces

Image Quality Without Compromise

Flexibility, versatility and user-friendly features are just the beginning. The Acclarix LX8 system also delivers the brilliant clarity and stunning image quality required in fast-paced environments - from hospitals to private practices to imaging centers.

- High fidelity, high-channel count architecture results in superb detail resolution, particularly when scanning at depth
- New generation of transducers with exquisite sensitivity so you can appreciate even the smallest details
- Tissue Adaptive Imaging continuously and automatically optimizes B-mode to provide superior image quality
- Adaptive color and spectral Doppler imaging via smart persistence and filtering enhances flow dynamics
- Exceptional computing power resulting in outstanding image processing

Concept + Design

Silicon Valley
USA

Design + Manufacture

Shenzhen
China

The Virtue of Value

How can Edan deliver so much innovation AND so much value? By capitalizing on the experience and expertise of a truly global enterprise. Acclarix technology is the result of Silicon Valley innovation and engineering excellence combined with Chinese design and manufacturing proficiency. The Acclarix LX8 is now poised to deliver unmatched value and performance across a broad range of applications:

- Abdomen
- OB/GYN
- Difficult-to-Image
- Cardiac Screening
- Vascular
- Breast
- Small Parts
- MSK
- Nerve