

CE

MT-206/MT-207



Trolley 台车

Assembling Instruction

安装指南

EDAN INSTRUMENTS, INC.

深圳市理邦精密仪器有限公司

Manual Ver: 1.2

Release Date: Jan. 2010

Part Number: 01.54.101957-12

Table of Contents

目 录

Assembly Instruction..... 1

装配说明 9

 **WARNINGS** 

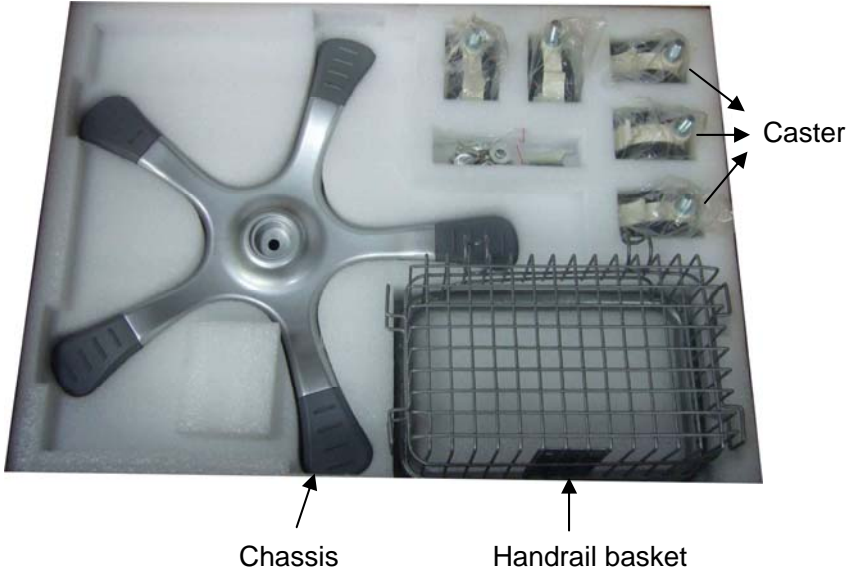
- 1 Assembling or disassembling of the Trolley should be performed by service personnel authorized by the manufacturer.
- 2 The maximum load of the top splint is 8 kg. Do not put heavy objects on it or lean on it.
- 3 The overall check of the Trolley, including the safety check, should be performed only by qualified personnel once every 6 months, and each time after fixing up.
- 4 The Trolley and accessories are to be disposed of according to local regulations after their useful lives. Alternatively, they can be returned to the dealer or the manufacturer for recycling or proper disposal.
- 5 Use a crosshead screw driver to secure all the screws tight when assembling the Trolley.

 **CAUTION** 

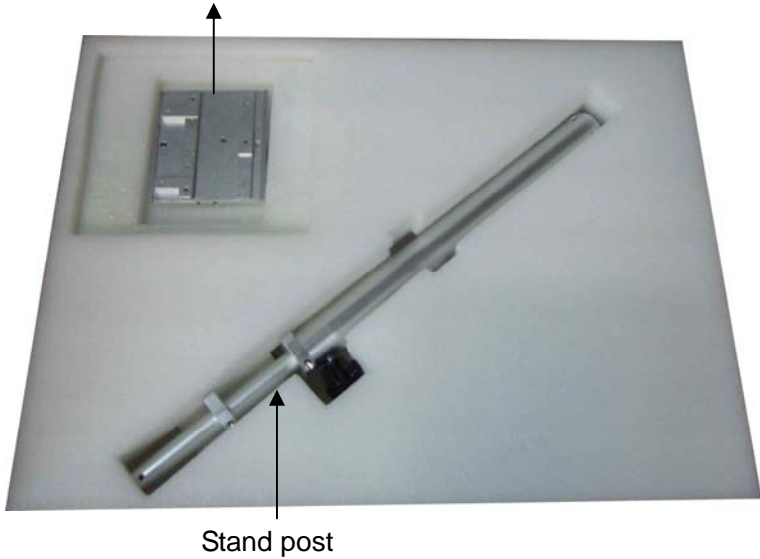
When adjusting the stand post, be careful not to trap your fingers.

NOTES:

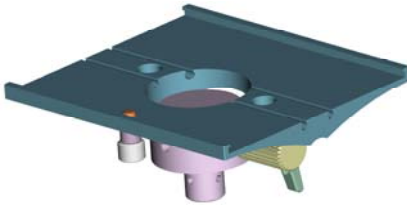
- 1 The following figures take M3 for example. The Trolley can also be used for M3B, M9, M9A, M9B, M8, M8A or M8B monitor by using a proper link board.
- 2 Make sure the casters can rotate normally before the setup.
- 3 Make sure the Trolley is firmly assembled and is in good condition before applying the monitor to it.



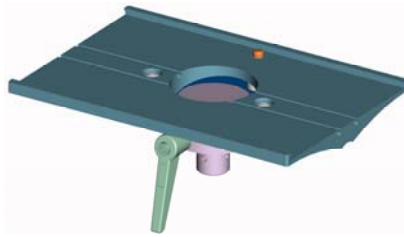
Top splint and link board



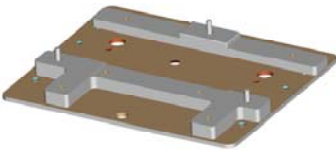
Major Parts



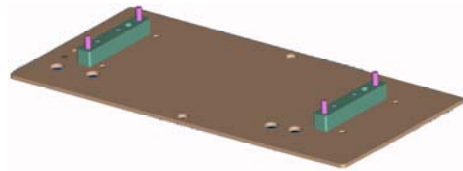
M3/M3B top splint assembly



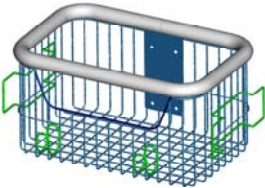
M9/M8 series top splint assembly



M3/M3B link board assembly



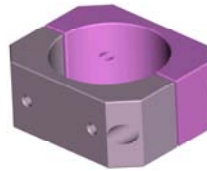
M9/M8 series link board assembly



Handrail basket



Lower basket (optional)



Basket flange (optional)



Stand post

Accessories



A



B



C



D.E.F



G



H



I (M3)



I (M9)



J

Accessories:

Item	Description	Qty. (pcs)
A	Φ12 Normal type spring washer	5
B	Φ12 Normal type plain washer	5
C	3-inch Medical caster	5
D	M10×50 bolt	1
E	Φ10 Normal type spring washer	1
F	Φ10 Normal type plain washer	1
G	M6×25 spacing bolt	1
H	Cross recessed pan head screw M5×14	4
I	Cross recessed countersunk head screw M4×25 (only available for MT-207 fixed with M9/ M8 series monitors)	4
	Cross recessed pan head screw M3×12 (only available for MT-206 fixed with M3/ M3B monitors)	3
J	17# normal open spanner	1

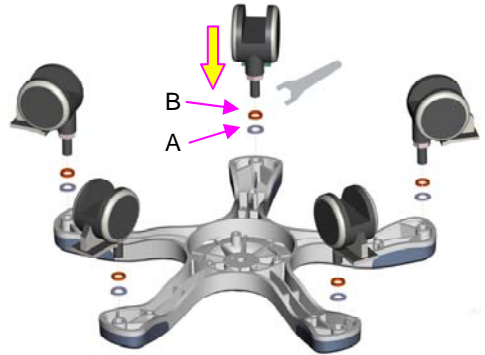
NOTE:

- 1 The I screws used for M3/M3B and M9/M8 series monitors are different.
- 2 The lower basket and flange should be used at the same time.
- 3 More screws are provided for standby in the package. Refer to the above table for the actual numbers of screws required in installation.

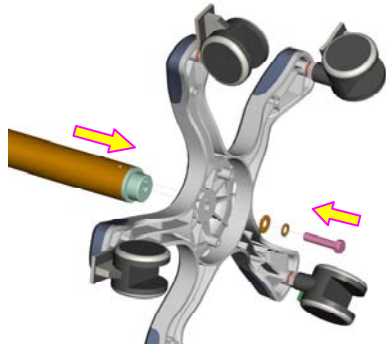
Procedure for Assembling Trolley:

1 Open the package and collate all the parts with the packing list.

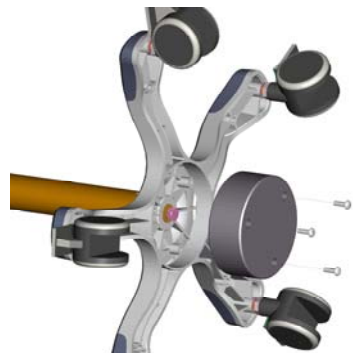
2 Take the chassis assembly out and upturn it on the packing foam. Put an A washer and then a B washer on the bolt for each caster. Tighten the five C casters to the chassis using the provided spanner.



3 Tilt the chassis, and insert stand post assembly into the groove of the chassis. Make sure they are fixed well. Install the D bolt, E washer and F washer, then tighten them from the center hole in the chassis.



4 For MT-207 Trolley, a balancing weight is installed on the chassis. You should take it off first. After installing the stand post as shown in step3, fix the balancing weight back to chassis by using three screws.

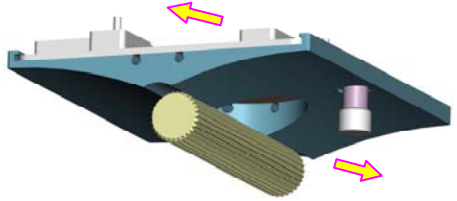


NOTE:

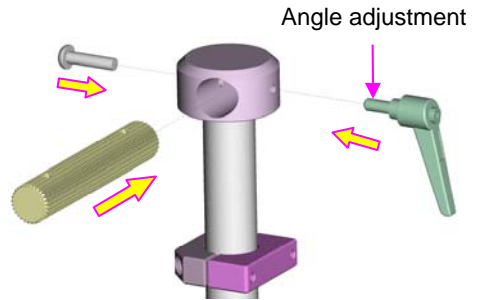
The caster has a pedal on it. You can step on it to stop the Trolley, while push it up to move the Trolley.



5 The top splint and link board are assembled together in package. Pull downwards the pin on the top splint, hold to slide them apart.



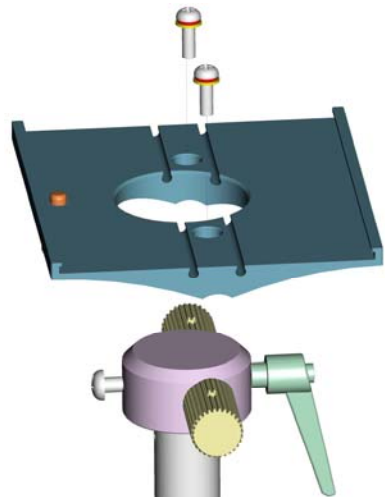
6 Loosen two screws on the top splint to take off the rotary axis, then pull the rotary axis through the flange hole of lifter rod. Insert the L-shape angle adjustment handle and a G screw into the two holes of flange, but do not tighten them.



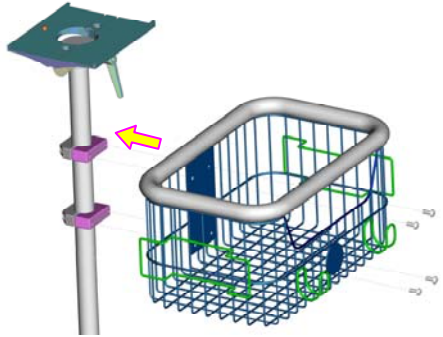
NOTE:

Put the L-shape angle adjustment handle at the thinner side, while the G screw on the other side.

7 Put the top splint on the flange of lifter rod. Make sure it faces the hole of rotary axis, then fix them well with two screws taken off in step 6. Tighten the L-shape angle adjustment handle and the G screw.



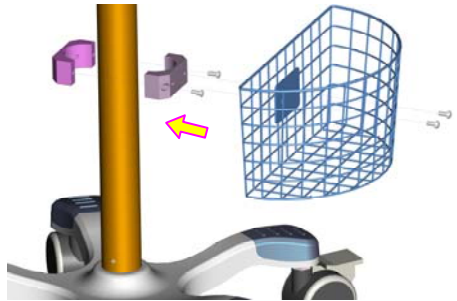
8 Level the handrail basket at the top two concave blocks and fix them with four H screws.



NOTE:

The edge of the handrail basket can be used as a handle to move the Trolley.

9 The lower basket and its concave are optional. First, install the concave block to a proper height of the stand post using two H screws. Then level the lower basket at the holes on the concave block and fix them with two H screws.



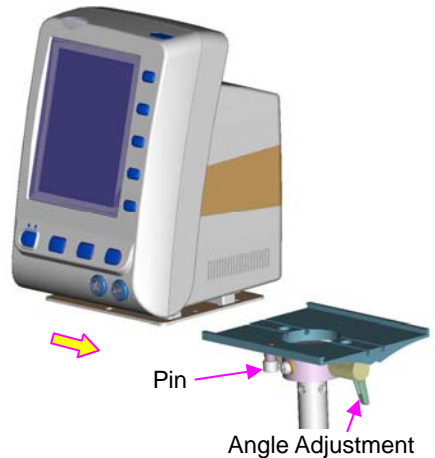
The assembly of Trolley is finished.

Fixing the Monitor to the Trolley

1 Upturn the monitor. Align the link board with the wall-mounting holes & screw holes. Fix them with three I screws.



- 2 Lift the monitor and slide the link board into the groove of the top splint sideways. When the board goes halfway, pull down the pin on the back of the top splint to allow the board to go through. Keep pushing the board in until the pin rebounds and clicks into the hole. The edges of the Link board and the top splint should match perfectly at this moment.

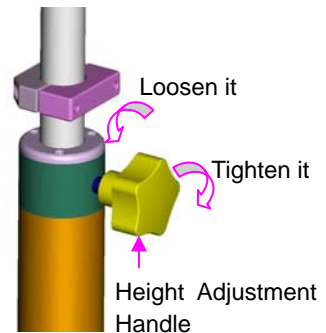


Adjusting the height of the Trolley:

WARNING:

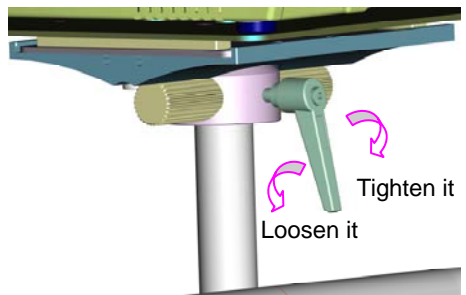
For your safety, you'd better take off the monitor and link board before adjusting the height of Trolley. Then hold the lifter rod steadily to avoid hurting yourself.

- 1 Hold the lifter rod steadily, anticlockwise rotate the height adjustment handle to loosen the rod, then adjust the height.
- 2 After adjusting, clockwise rotate the handle to tighten the lifter rod.



Adjusting the angle of the top splint:

- 1 Hold the top splint steadily, anticlockwise rotate the L-Shape angle adjustment handle to loosen it. If the handle can not be rotated for being obstructed by the top splint, pull it out for about 2mm and anticlockwise rotate it again. Then adjust the top splint to a proper angle.

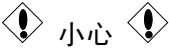


- 2 After adjusting, clockwise rotate the handle to tighten it.



警告

- 1 台车的装配和拆卸应由专业的售后服务人员进行。
- 2 台车顶托板最大承受重量是 8kg，请勿在上面放置其他重物或直接倚靠。
- 3 每 6 个月或者在每次维修后，必须由专业维修人员对台车进行一次全面性检查，包括安全性检查。
- 4 本台车和可循环使用部件在有效的生命期限后必须按当地法律规定进行处理或返回给制造商循环利用。
- 5 组装台车时请用十字螺丝刀拧紧所有螺钉。



小心

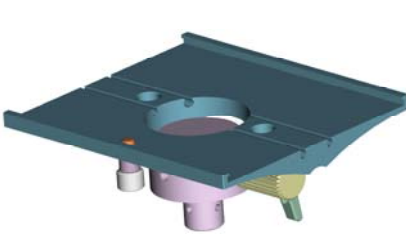
调节立管组件时，请小心不要夹到手。

注意：

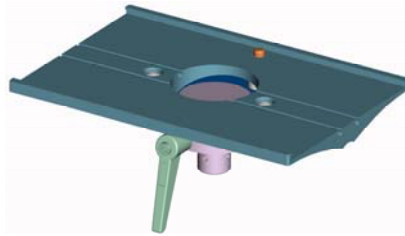
- 1 以下安装步骤图以 M3 为例，台车还可通过不同的螺钉和转接板来安装至 M3B, M9, M9A, M9B, M8, M8A 和 M8B 监护仪。
- 2 安装前请确认脚轮是否转动正常。
- 3 在将监护仪安装到台车前，要确保台车已经正确且稳固地安装。



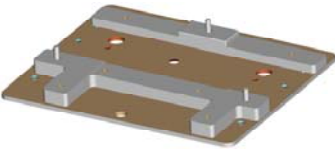
主要部件



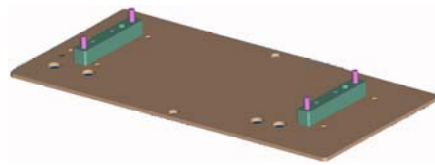
M3/M3B 顶托板



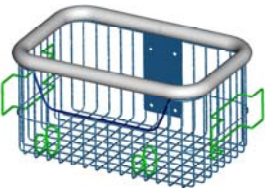
M9/M8 系列顶托板



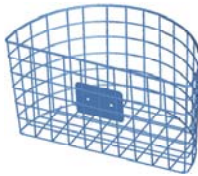
M3/M3B 转接板



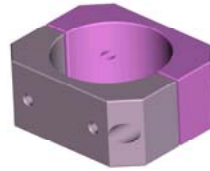
M9/M8 系列转接板



扶手篮子



下篮子 (选配)



篮子法兰 (选配)



立管组件

附件



A



B



C



D.E.F



G



H



I (M3)



I (M9)



J

附件列表：

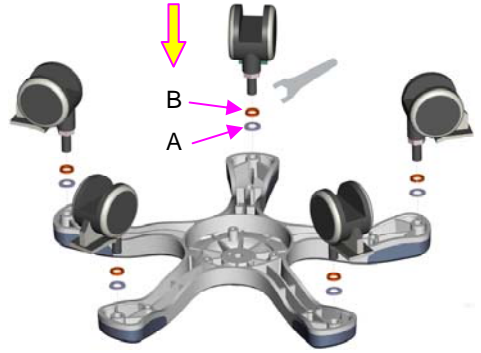
编号	名称	数量 (个)
A	Φ12 标准弹簧垫圈	5
B	Φ12 标准平垫圈	5
C	3 寸医用脚轮	5
D	M10×50 螺栓	1
E	Φ10 弹簧垫圈	1
F	Φ10 平垫圈	1
G	M6×25 限位螺钉	1
H	M5×14 十字槽盘头螺钉	4
I	M4×25 十字槽沉头螺钉（仅适用于 M9/M8 系列监护仪）	4
	M3×12 十字槽盘头螺钉（仅适用于 M3/M3B 监护仪）	3
J	17# 标准开口扳手	1

注意：

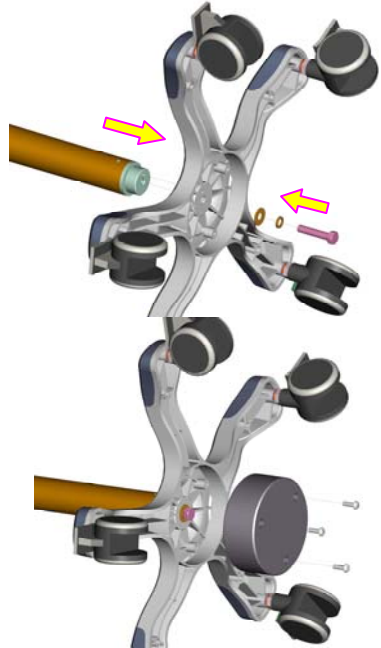
- 1 用在 M3/M3B 和 M9/M8 系列的 I 螺钉型号是不同的。
- 2 下篮子和篮子法兰要同时配套使用。
- 3 每种螺钉都多提供了几颗以备用。安装中实际需要的螺钉数目见上表。

组装台车

- 1 打开纸箱，对照装箱单检查所有部件；
- 2 将底盘翻过来平放在纸箱内的珍珠棉上；在脚轮的螺杆上先放一个 A 垫圈，再放一个 B 垫圈，然后用供的扳手分别把 5 个 C 脚轮锁到底座上；



- 3 侧过底座，将立管组件插入底座槽内，确保立管底部法兰上的凸出部位对准底座槽内的小凹槽，将 D 螺栓、1 个 E 垫圈和 1 个 F 垫圈装好，然后从底座底部中轴小孔位置将向上锁紧。



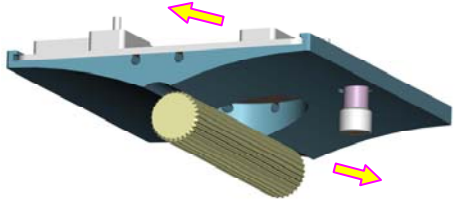
- 4 MT-207 台车底盘配有一个配重块，旋转配重块的 3 颗螺钉将其取下。将立管组件安装至底盘后，再将配重块重新安装至底盘，用 3 颗螺钉锁紧。

注意：

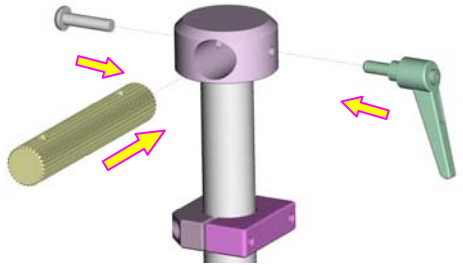
脚轮上带有制动阀。踩下它可停止移动台车，将它推上去即可移动台车。



- 5 顶托板组件和转接板组件是包装在一起的，将它们分开；稍微向下拉动顶托板底部的销钉，同时顺着托板边缘凹槽的方向推动转接板，直到与顶托板分离。



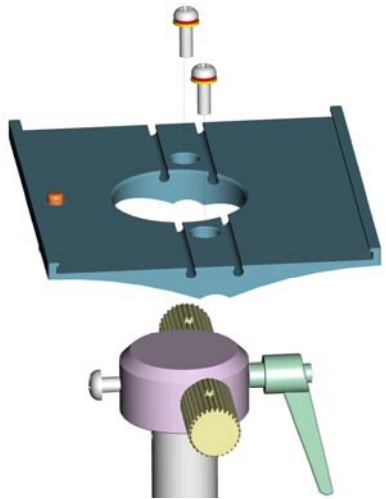
- 6 松开顶托板组件的上方的 2 颗螺钉取下旋转轴，将旋转轴穿过升降杆顶部法兰上的通孔；
将 L 形角度调节手柄和 G 螺钉分别旋入法兰上相对的两个螺钉孔，但不拧紧。



注意：

L 形角度调节手柄应位于法兰壁较薄的一侧，G 螺钉位于较厚一侧。

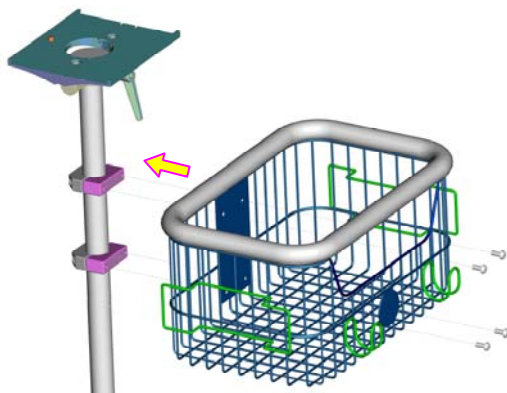
- 7 把顶托板放到升降杆顶部法兰上，对准旋转轴的螺钉孔位，并用步骤 6 中从顶托板拆下的 2 颗螺钉锁紧；
然后拧紧 L 形角度调节手柄和 G 螺钉。



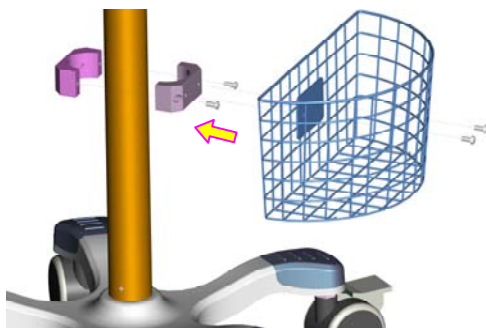
8 对准扶手篮子和升降杆上两个凹块的螺钉孔，用 4 颗 H 螺钉锁紧。

注意：

扶手篮子的边缘即为扶手，可以用来推动台车。



9 如果选配了下篮子及其凹块，先用 2 颗 H 螺钉将凹块锁到立管的适当高度上，再对准下篮子和凹块上的螺钉孔位，并用 2 颗 H 螺钉锁紧。



台车安装完成。

将监护仪安装到台车

1 将监护仪底面朝上，将带有安装孔和螺钉孔的转接板放置好，用 3 颗 I 螺钉固定好。



- 2 抬起监护仪，将转接板从侧面对准顶托板边缘凹槽并推入，推至一半时用手拉下顶托板背面的销钉，使转接板组件能顺利插入槽内，继续推进直至销钉复位，此时转接板和顶托板边缘应恰好完全对齐。

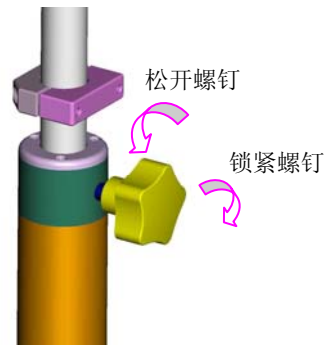


调节台车高度：

警告：

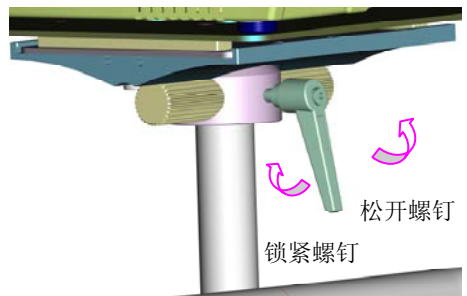
为安全起见，调节台车高度时，建议先取下监护仪（带转接板），再扶稳升降杆，以防手被夹伤或人被砸伤。

- 1 扶稳升降杆，逆时针旋转调节手柄松开升降杆，这时可以根据需要调节升降杆高度。
- 2 最后顺时针旋转调节手柄，将升降杆锁紧。



调节顶托板角度：

- 1 扶稳顶托板，逆时针旋转顶托板下的 L 形角度调节手柄以松开螺钉。如果手柄受到顶托板阻挡而不能转动，请将它往外拉出约 2mm 再逆时针旋转，然后调整托盘到适当角度。
- 2 调整顶托板到适当角度后，再逆时针拧紧调节手柄。



EDAN

EDAN INSTRUMENTS, INC.

3/F-B, Nanshan Medical Equipment Park, Nanhai Rd 1019#, Shekou,
Nanshan Shenzhen, 518067 P.R. CHINA
TEL: +86-755-26882220 FAX: +86-755-26882223

EC REPRESENTATIVE

Shanghai International Holding Corp. GmbH (Europe)

Eiffestrasse 80, D-20537 Hamburg Germany
TEL: +49-40-2513175 FAX: +49-40-255726
E-mail: antonjin@yahoo.com.cn

深圳市理邦精密仪器有限公司

注册地址: 深圳市南山区蛇口南海大道 1019 号南山医疗器械园 B 栋三楼
生产地址: 深圳市南山区南海大道兴华工业大厦 8 栋 A/B 座 2 楼
邮政编码: 518067 电话: (0755) 26882220 传真: (0755) 26882223